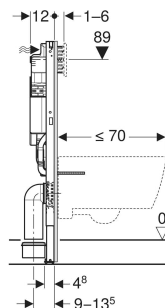
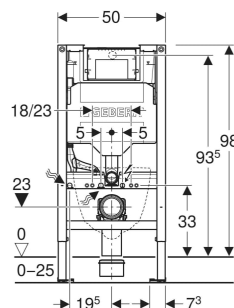


Geberit Duofix element for wall-hung WC, 98 cm, with Sigma concealed cistern 12 cm



APPLICATION PURPOSES

- For metal and wood frame walls
- For Geberit Duofix system walls
- For installation in part- or room-height prewalls
- For installation in room-height partition walls
- For floor constructions 0–25 cm
- For wall-hung WCs
- Not suitable for Sigma70 flush plates
- Not suitable for Sigma80 flush plates

CHARACTERISTICS

- 2025 range
- Statically self-supporting frame, protected against corrosion with powder coating
- Frame for wall-hung WCs with connection dimensions as per EN 33 and projection up to 70 cm
- Rotating foot plates, suitable for installation in U profiles UW 50 and UW 75
- Foot plates that can be mounted in Geberit Duofix system rail without tools, without additional components
- Galvanised non-slip leg supports protected against corrosion
- Connection bend can be mounted without tools at different depths, adjustable range 45 mm
- Geberit Sigma concealed cistern 12 cm, fully insulated against condensation

- Cistern fulfils standard requirements in accordance with EN 14055, Class II
- For front actuation, suitable for single, dual and stop-and-go flushes
- Immediate post flush possible with factory setting
- Tool-free installation and maintenance work on concealed cistern
- Flush bend fitted
- Cistern rotatable by 180° for access from service room
- Water supply connection on the rear centre
- Protection box for service opening, can be cut to length, protects against moisture and dirt
- With conduit pipe for feed pipe for Geberit AquaClean shower toilets and for connection cable
- Fastening option for electrical connection

TECHNICAL DATA

Flow pressure	0.1–10 bar
Operating temperature, water max.	25 °C
Flush volume, factory setting	5.8 / 3 l
Flush volume small, adjustment range	2–4 l
Product material	Steel

SCOPE OF DELIVERY

- Water supply connection R 1/2", compatible with MasterFix and MeplaFix, with integrated angle stop valve and hand wheel
- Protection box for service opening
- 2 wall anchors
- Connection set for WC, ø 90 mm
- Connection bend 90° made of PE-HD, ø 90 mm
- Adaptor socket made of PE-HD, ø 90 / 110 mm
- Fastening and protection material

ACCESSORIES

- Geberit set of Power & Connect box and power supply unit for element for wall-hung WC
- Geberit Duofix set of wall anchors for single installation, corner construction
- Geberit Duofix set of wall anchor extensions
- Geberit Duofix system fastening bracket
- Geberit Duofix fastening material for stud clearance 50–57.5 cm
- Geberit Duofix set of foot fastener on rear wall
- Geberit set of support brackets for WC ceramic appliances with small contact surfaces
- Geberit sound insulation set for wall-hung WC
- Geberit Duofix set of foot extensions 20 cm length
- Geberit drilling template for wall-hung WC and Geberit AquaClean

- Insert for Geberit DuoFresh stick, for Sigma concealed cistern 12 cm
 - Geberit DuoFresh insert for stick, for Sigma concealed cistern 12 cm
- Geberit DuoFresh module with manual actuation, for Sigma concealed cistern 12 cm
 - Geberit DuoFresh module with manual actuation and insert for Geberit DuoFresh stick, for Sigma concealed cistern 12 cm
- Geberit DuoFresh module with automatic actuation, for Sigma concealed cistern 12 cm
 - Geberit DuoFresh module with automatic actuation and insert for Geberit DuoFresh stick, for Sigma concealed cistern 12 cm

Art. no.	B cm	H cm	T cm	
111.911.00.6	50	98	12	
New				

New article available from 01.05.2025