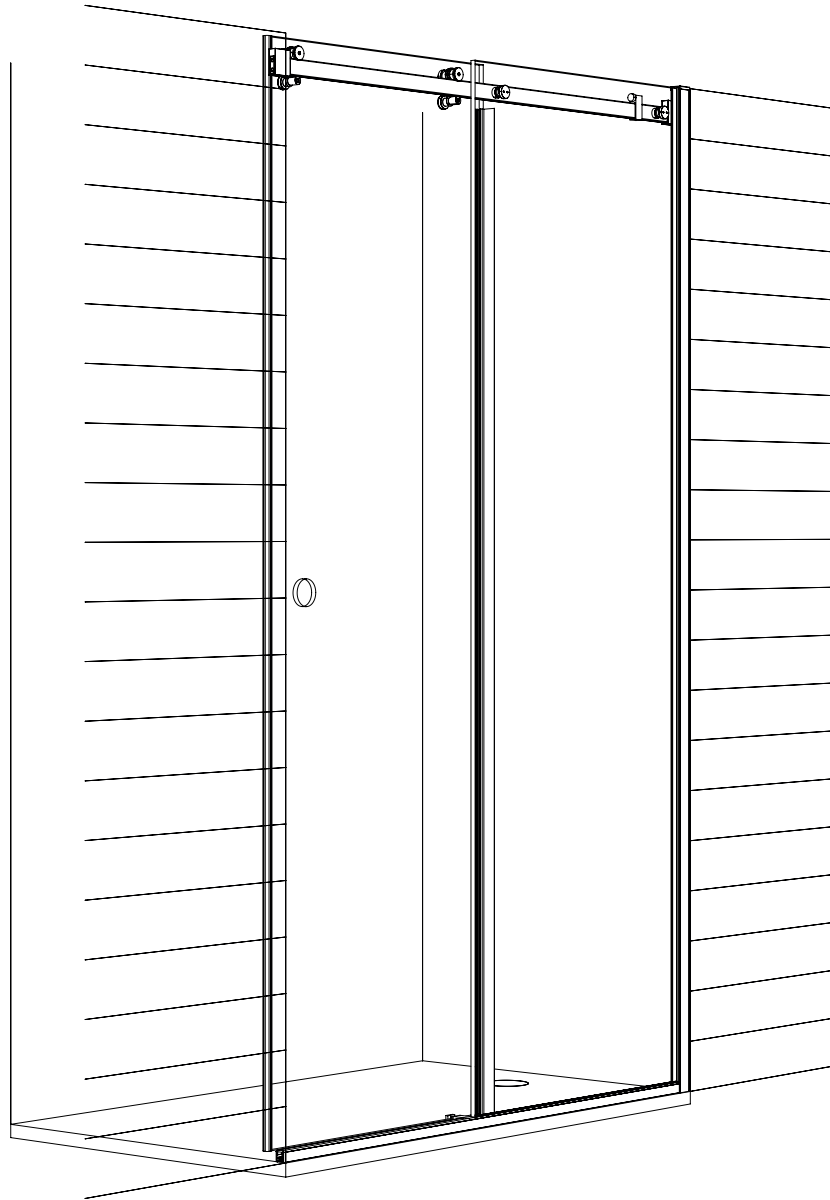


THE SHOWER LAB



VIEW 30



Illustration - View 30
Right Hand

IMPORTANT

- This shower screen / enclosure must be installed by suitably qualified individuals. We recommend a minimum of two people for safe assembly of certain sections of this screen.
- Ensure all appropriate safety equipment, especially protective footwear, safety glasses and gloves are used.
- When drilling holes in ceramic tiles, use masking tape to prevent the drill from slipping: DO NOT use hammer action as this will crack the tiles. Use a high quality drill bit to ensure a clean, precise hole.
- Tighten hinges and brackets to the recommended **15.6N**.
- Please leave these instructions with the customer following installation.

PRIOR TO INSTALLATION

- Before disposing of the packaging and prior to commencing assembly, please check all the components to ensure that they have been supplied correctly and are undamaged. Subsequent claims for missing or damaged pieces will not be accepted once the packaging has been disposed of and installation commenced.
- In the event of any queries please contact your supplier quoting the relevant model information.
- The Tray / Tiled floor on which this screen is to be installed must be level on all sides.
- It may be necessary to use alternate fixings to those supplied, depending on the properties of the walls to be fixed to.
- Use the protective corners supplied at all times until the glass is moved to its final position.
- Ensure that the glass is installed correctly, taking care to avoid installing the glass upside down. On certain panels an easy clean coating is applied to one side only, this is clearly marked with a sticker on the non-coated side. The coated surface is to be fitted inwards towards the inside (wet side) of the screen.
- Ensure that all surfaces to be sealed are clean and dry prior to applying the silicone sealant. Use a high grade fungal resistant sealant.
- Allow a minimum of 24 hours after application of the silicone sealant prior to using the screen.

TOOLS & MATERIALS REQUIRED

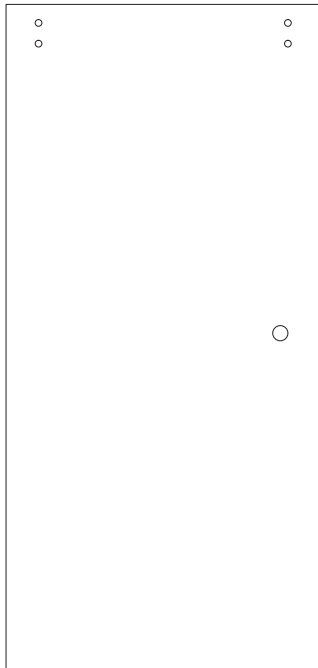
Junior Hacksaw	Modelling Knife	High Quality Silicone Sealant
Straight Edge (Steel Rule)	Spirit Level	Digital Torque Wrench
Fine Tooth File	Pencil	Tape Measure
Set or Roofing Square	Silicone Gun	Pozi-drive
Masking Tape	Power Drill	Screwdrivers, PZ1&2
	Ø6mm Masonry Drill Bit	Safety Glasses and
	2x Suction Glass Lifters	Gloves

CARE AND MAINTENANCE

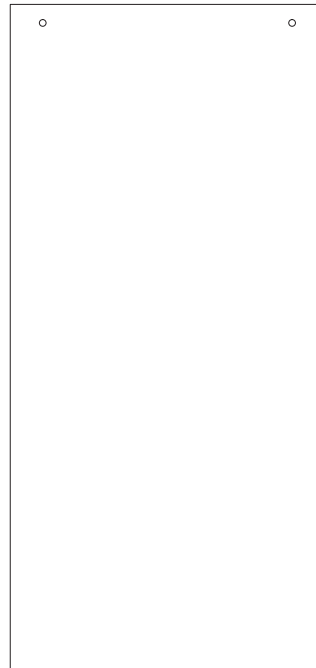
(please ensure that these instructions are left with the installed unit)

- We recommend routine cleaning of your screen / enclosure with hot water using a soft cloth, then drying with a dry soft cloth or chamois leather.
Ritec Aftercare for Shower Glass is recommended for best results.
- All glass has been treated with EASY CLEAN glass finish and care must be taken to avoid any abrasive cleaning products that may damage the special surface protection.
- DO NOT use acidic based de-scaler products or products containing bleaches or solvents.

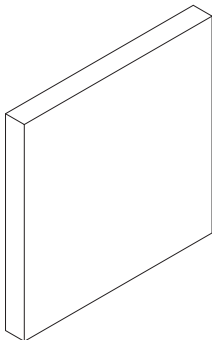
Supplied Parts



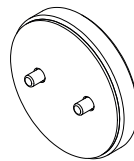
Door
x1



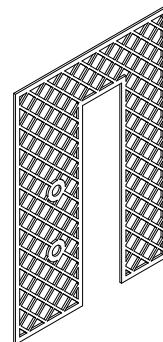
Inline Panel
x1



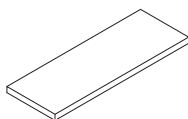
Nylon Block
x1



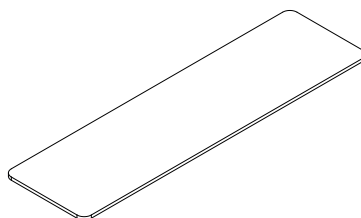
Pig Nose Adapter
x1



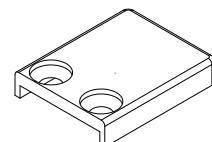
Slider Bracket Template
x1



Spacers

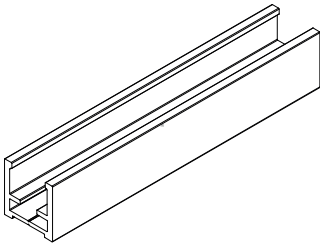


Packers

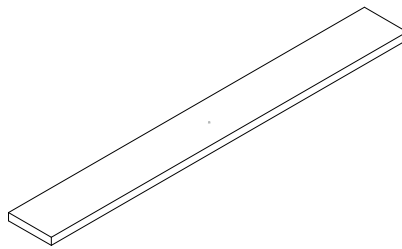


Wall Profile End Cap
x1

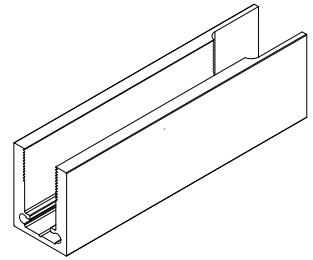
Supplied Parts



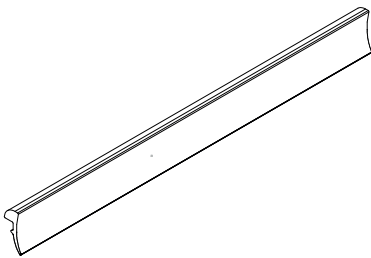
Underframe
x1



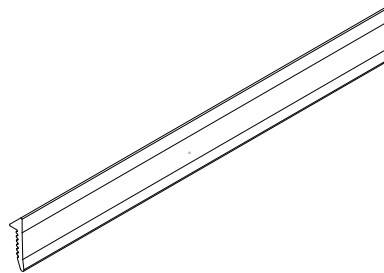
Underframe Gasket
x1



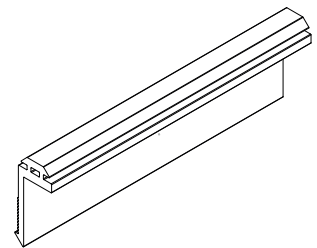
Wall Profile
x1



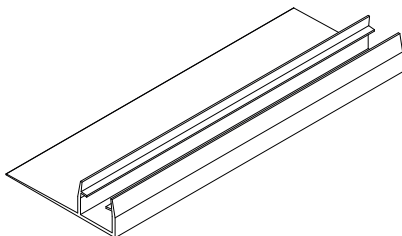
Underframe Wedge Gasket
x2



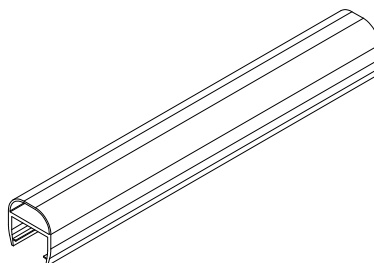
Wall Profile Rigid Seal
x1



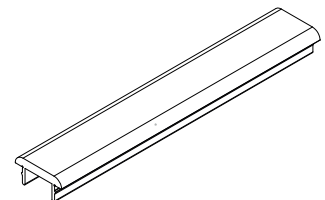
Wall Profile Soft Seal
x1



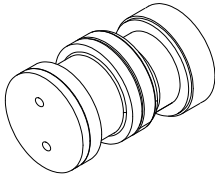
Glass to Glass Slider Seal
x1



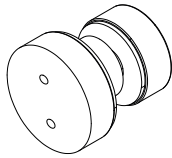
Glass to Wall Seal
x1



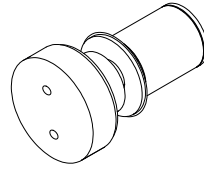
Underframe Top
x1

Supplied Parts

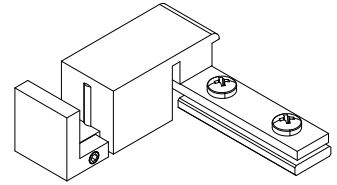
Slider Door Roller
x2



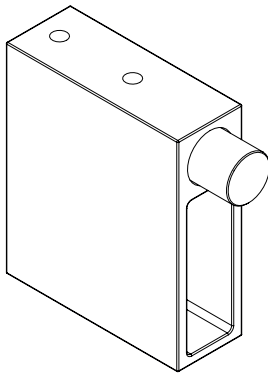
Slider Panel Fixing
x2



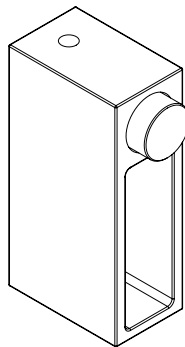
Slider Door Retainer
x2



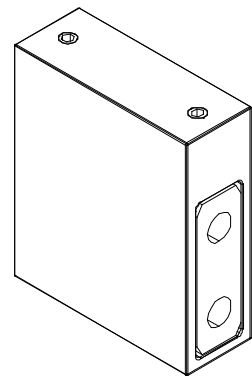
Bottom Door Guide
x1



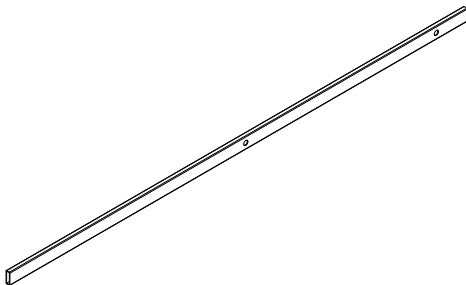
Slider Wall Bracket with Stop
x1



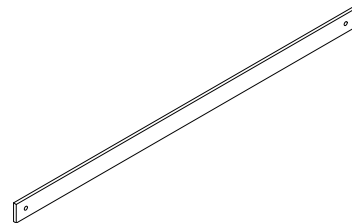
Slider Door Stop
x1



Slider Wall Bracket
x1



Slider Bar
x1

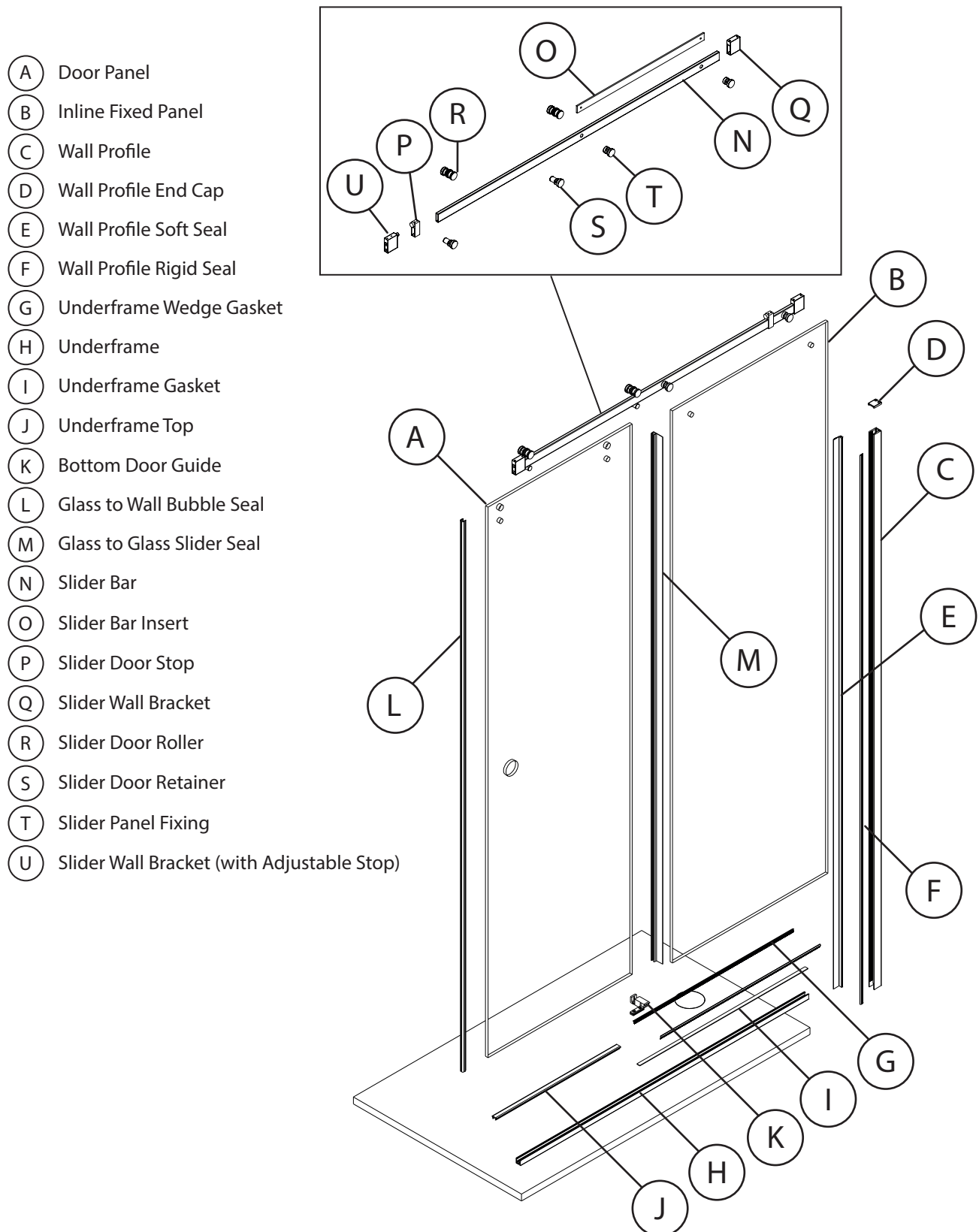


Slider Bar Insert
x1

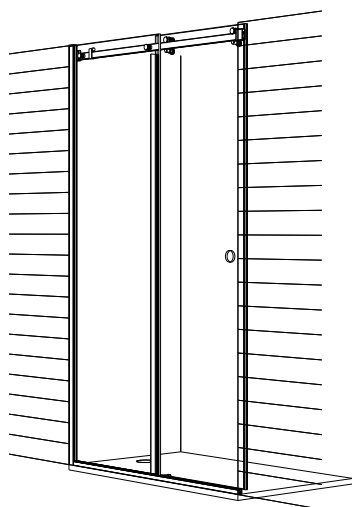
These instructions are for the View 30.

The following instructions are valid for both the 20mm and 30mm profiles. The 30mm profile is used in the following instructions.

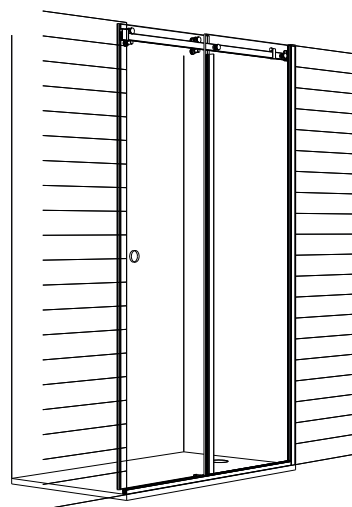
Please use the below diagram to reference the list of parts.



LH



RH



STANDARD ENCLOSURES - 30mm (CH30) Wall Profile

Code	Width	Opening Gap	Overlap	Height	✓
VR30S110	1030-1070	433 - 473	70 - 30	2000	<input type="checkbox"/>
VR30S120	1130-1170	483 - 523	70 - 30	2000	<input type="checkbox"/>
VR30S130	1230-1270	483 - 523	70 - 30	2000	<input type="checkbox"/>
VR30S140	1330-1370	583 - 623	70 - 30	2000	<input type="checkbox"/>
VR30S150	1430-1470	583 - 623	70 - 30	2000	<input type="checkbox"/>
VR30S160	1530-1570	683 - 723	70 - 30	2000	<input type="checkbox"/>

BESPOKE ENCLOSURES - 30mm (CH30)/ 20mm (CH20) Wall Profiles

If you have a Bespoke Enclosure, reference the Install Sheet for the panel specifications of the Enclosure.

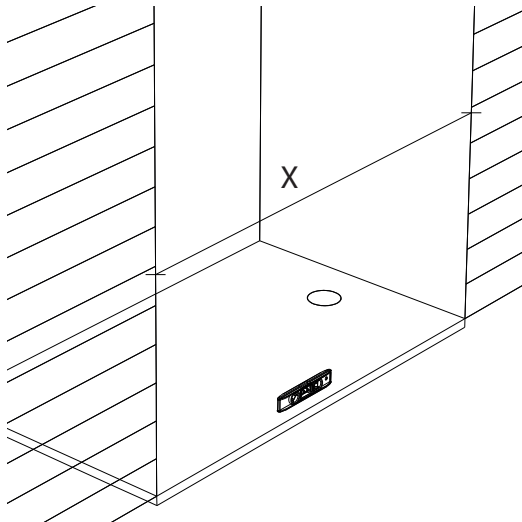
CH30 - Bespoke Enclosure Width: Door Panel + Inline Panel - 54 = Minimum Width + 54 = Maximum Width

CH20 - Bespoke Enclosure Width: Door Panel + Inline Panel - 54 = Minimum Width + 44 = Maximum Width

01

Ensure the base is level.

Measure the width of the opening where the door is to be fitted.



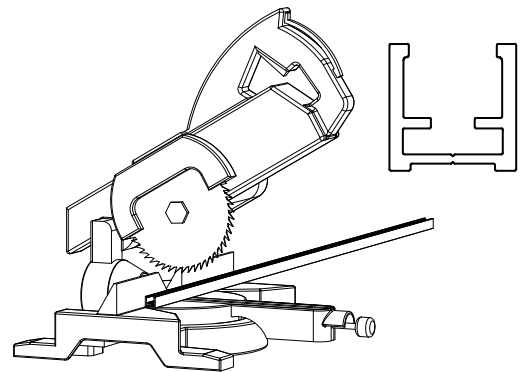
02

Mark this measurement on the Underframe bottom.

It is recommended to use masking tape on the Underframe to mark your measurement.

Cut squarely using a chop saw.

Use a fine toothed file to remove any burrs, be careful not to damage the surface finish.

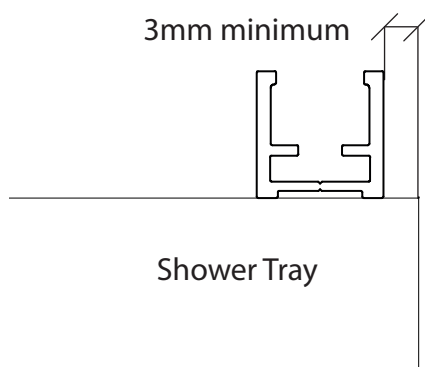


03

Position the Underframe parallel to tray edge.

If using a raised shower tray, leave a minimum 3mm gap from the edge of the tray (5mm is recommended). This is the lip distance.

DO NOT fix the Underframe channel to the tray at this stage.

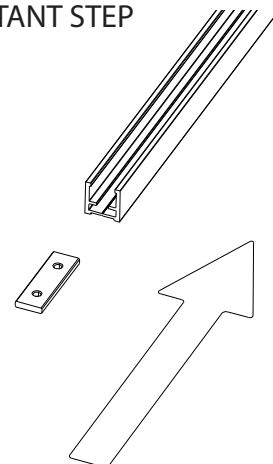


04

Slide the Bottom Door Guide Fixing Plate into the T Slot of the Underframe.

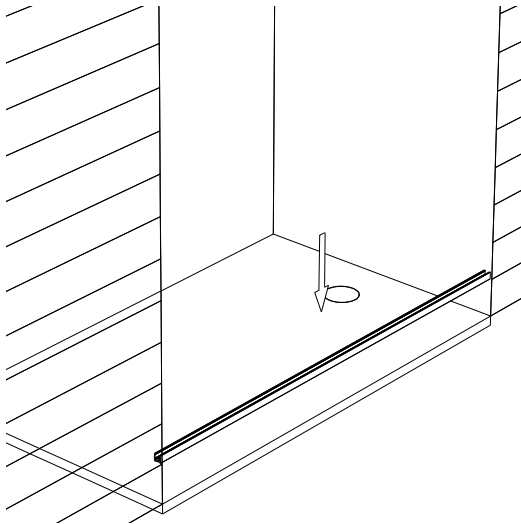


IMPORTANT STEP



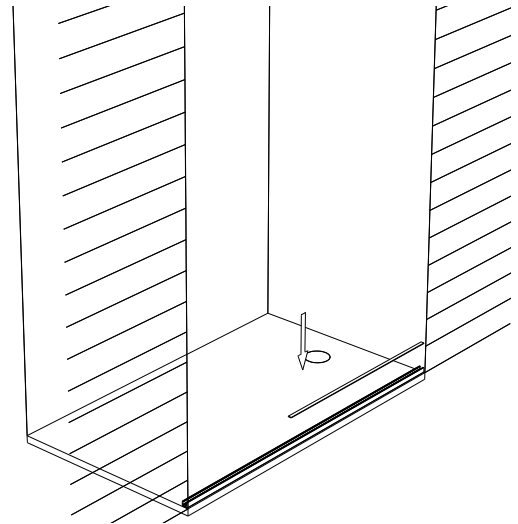
05

Fix the Underframe into the correct position. Peel off the backing strips from the self adhesive tape and push firmly into position.



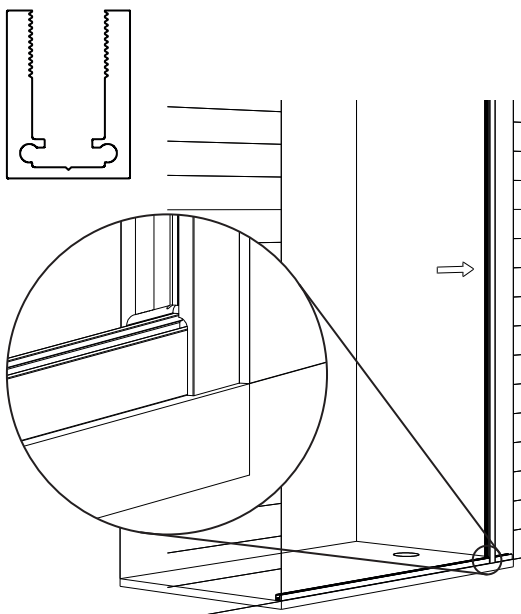
06

Place the Underframe Gasket into the Underframe and butt up against the wall.



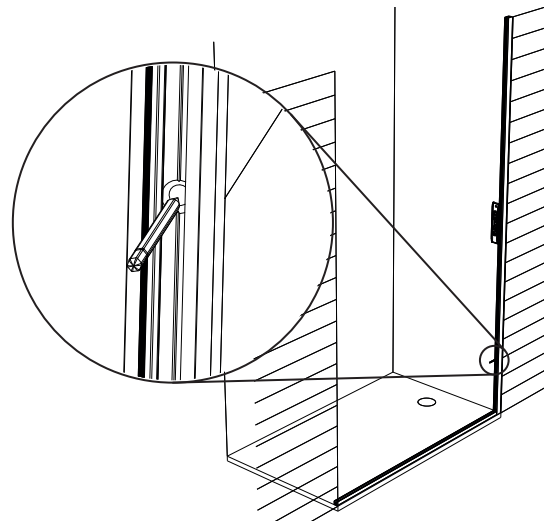
07

Place the Wall Profile over the Underframe and up against the wall.



08

Ensure the Wall Profile is vertical by using a spirit level. Mark the positions of the pre-drilled holes.



09

Remove the Wall Profile and drill holes with a 6mm high quality drill bit for a clean and precise hole.

Fully insert the wall plugs.

Professional Tip

If drilling ceramic tiles, place masking tape on the tiles before marking and drill through the tape to prevent the drill bit from skidding.

DO NOT use Hammer Action as this will break the tiles.

10

Pre drill the No 6 screws in to the Wall Profile to create the thread for the Top Cap, then REMOVE screws.

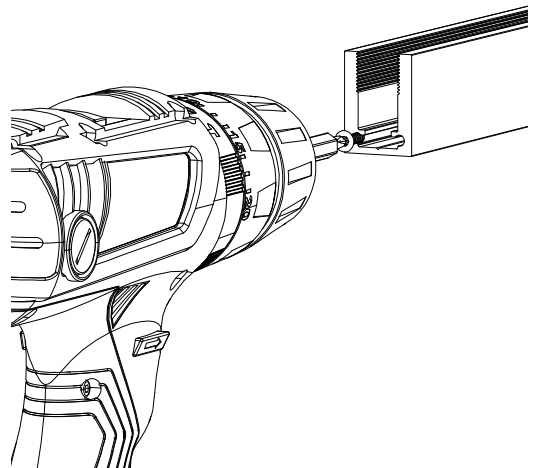
Fix the Wall Profiles to the wall using the No 8 screws.



(No 8) Profile - Wall



(No 6) Profile - Top Cap

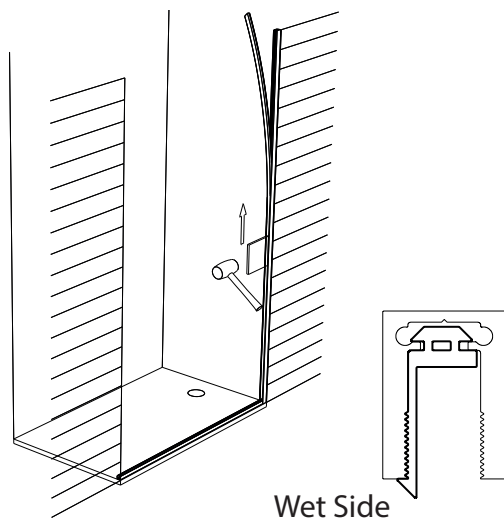


11

Take the Wall Profile Soft Seal and push the seal into place on the vertical Wall Profile to cover the screws.

Ensure the fin is on the inside (wet side).

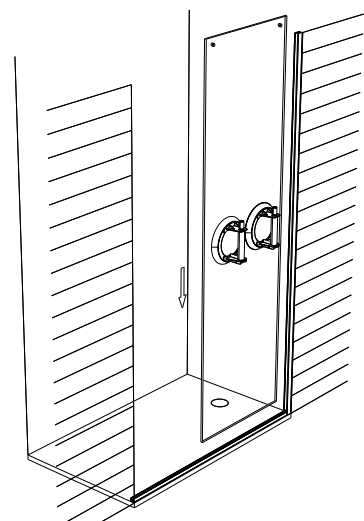
Use the Nylon Block to help.



12

Using purpose built "Glass Lifters", position and sit the Inline Glass Panel on to the Underframe Gasket and push against the Wall Profile.

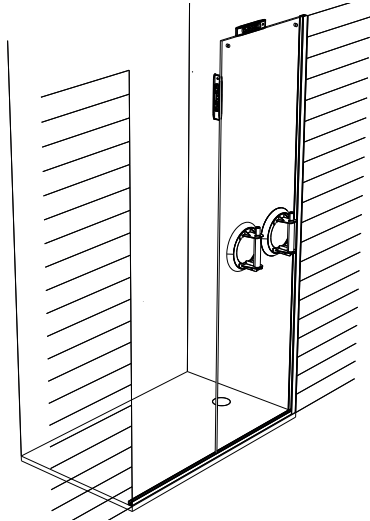
Note the orientation and position of the Panel, this can be determined by any holes or attached labels.



13

Remove and replace the Panel adding or subtracting spacers as necessary to level the Panel (to a maximum height of 5mm inside the Underframe).

Check the Panel is level using a Spirit Level.

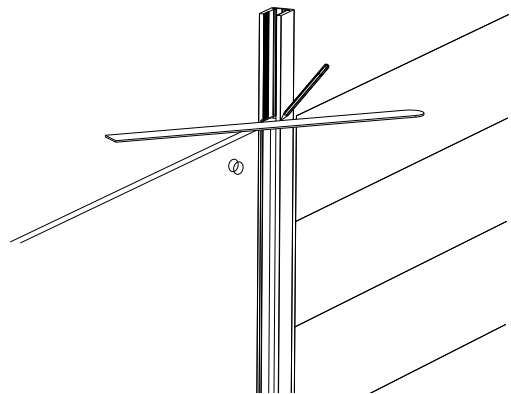


14

If the Wall Profile is flush with the Inline Glass Panel, move on to step 17.

If the end of the Wall Profile is not flush with the top of the Inline Glass Panel, mark the Wall Profile. Using a straight edge, mark where the wall channel needs to be trimmed.

To protect the channel finish, it is recommended to mark on masking tape.



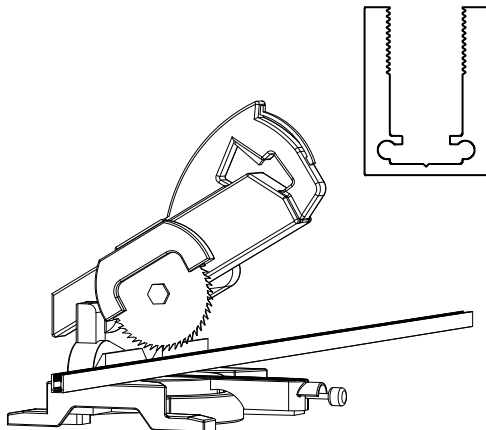
15

Remove the Inline Panel, Wall Profile Soft Seal, and the Wall Profile.

Trim the Wall Profile.

Use a fine file to remove any burrs. Be careful not to damage the channel finish.

Re drill the screws in to the Wall Profile and remove after drilling.



16

Reinstall the Wall Profiles and Wall Profile Soft Seals.

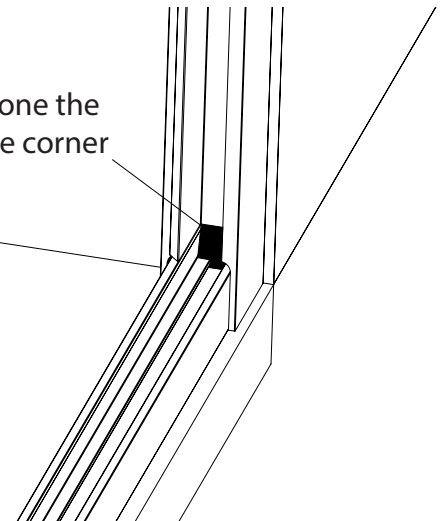


Add silicone in the corner where the Wall profile Meets the Underframe at the back.

Re-install the Glass.



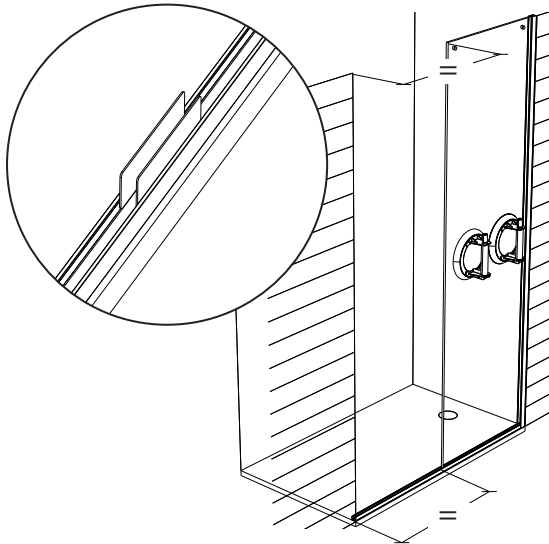
Silicone the inside corner



17

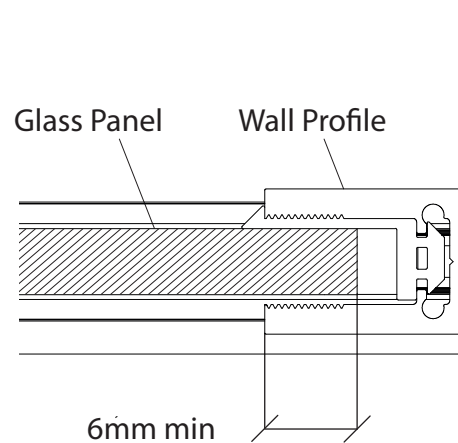
Measure and check the distance from the Inline Panel to the opposite wall tiling at the bottom and at the top are equal.

To centre the panel, add 1mm Packers on both sides of Inline Panel in the Underframe.



18

Ensure there is adequate glass in the Wall Profile. (6mm is recommended)

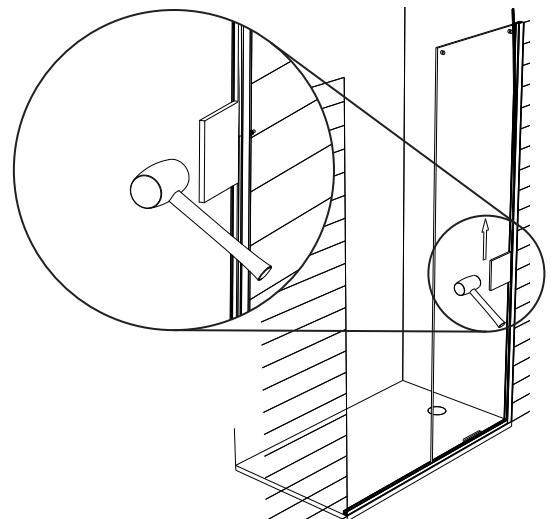
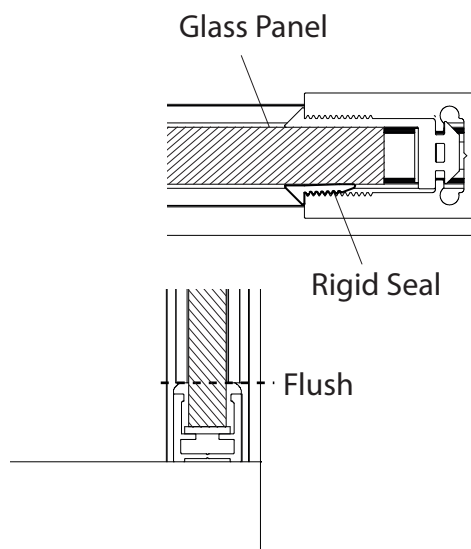


19

Apply Rigid Seal to dry side of the Wall Profile starting from the archway of the Wall Profile up to the top face of the Wall Profile.

20

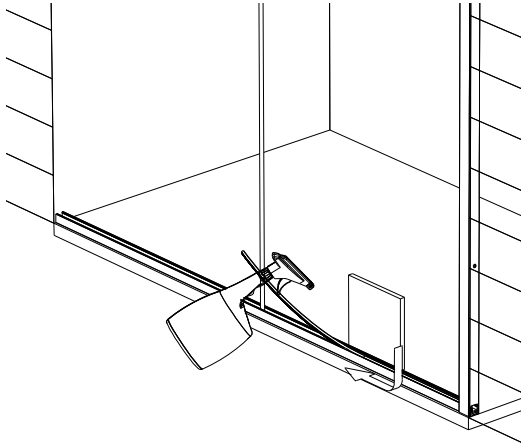
Gently tap the Wall Profile Rigid Seal into place using a rubber mallet with the Nylon Block to protect the Glass and the Wall Profile.



21

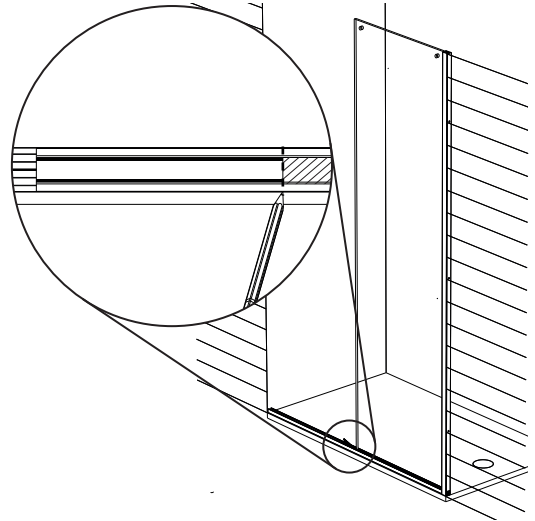
Remove Packers and feed the Underframe Wedge Gasket into the archway gap of the Fixed Panel and trace along the Glass on both sides.

Spray water on Glass Panel and use Nylon Block to help feed Gasket.



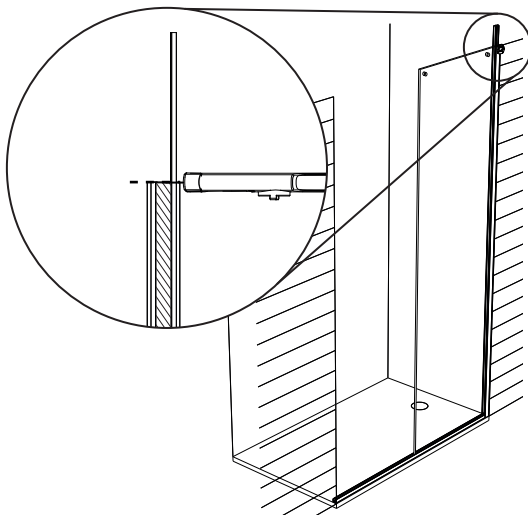
22

Trim the Wedge Gaskets at the edge of the Inline Panel.



23

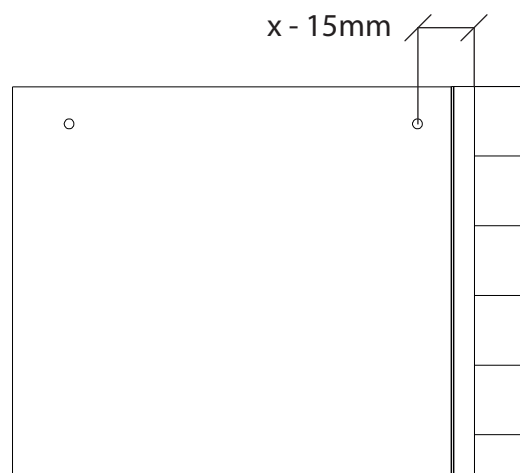
Trim both of the Wall Profile seals at the top face of the Wall Profile using a blade.



24

Measure the distance from the wall to the nearest fixing hole on the Inline Panel. Ensure this measurement is truly horizontal.

Subtract 15mm to get your final dimension.



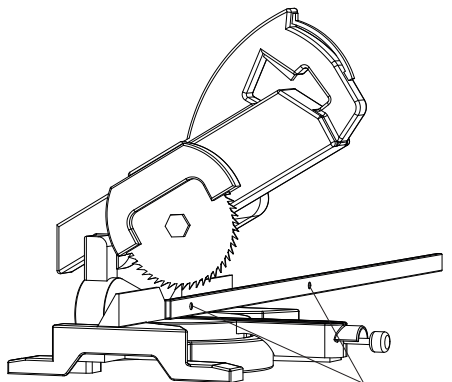
25

Mark the final dimension on the Slider Bar on the fixing hole side.

Cut squarely using a chop saw and finish the edge.



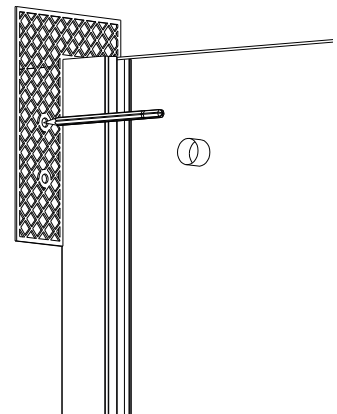
SLIDER BAR IS STAINLESS STEEL



Fixing Holes

26

Use the Slider Rail Bracket Template to mark the hole positions for the Slider Rail Bracket on the Wall Profile side of the enclosure.



27

Using a $\varnothing 6\text{mm}$ high quality drill bit for a clean and precise hole, drill all holes and fully insert the wall plugs.

Fix the Slider Wall Bracket in place using the supplied screws.

Professional Tip

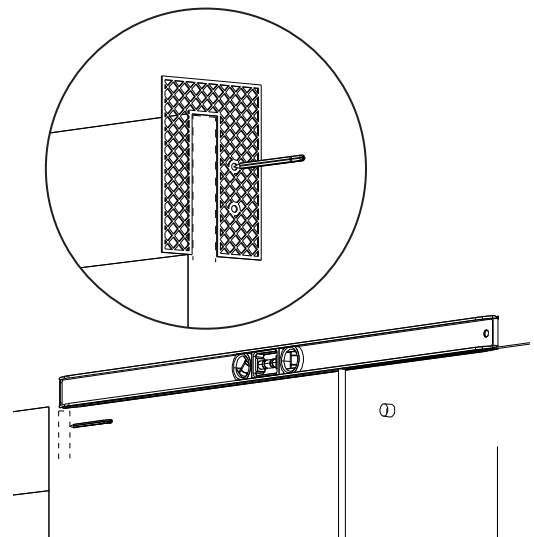
If drilling ceramic tiles, place masking tape on the tiles before marking and drill through the tape to prevent the drill bit from skidding.

DO NOT use Hammer Action as this will break the tiles.

28

Trace the Wall Profile on the door side wall. Use the Spirit Level against the Inline Panel to accurately trace the Profile.

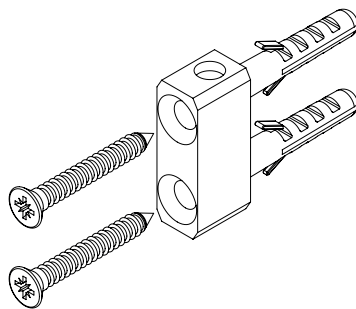
Align the Slider Rail Bracket Template to the sketch and mark the holes.



29

Using a $\varnothing 6\text{mm}$ high quality drill bit for a clean and precise hole, drill all holes and fully insert the wall plugs.

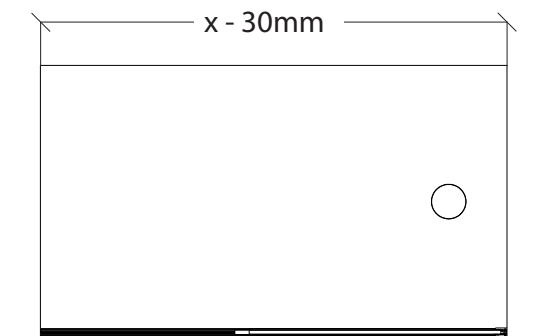
Fix the Slider Wall Bracket in place using the supplied screws.



30

Measure the wall to wall distance. Ensure this measurement is truly horizontal.

Subtract 30mm to get your final dimension.



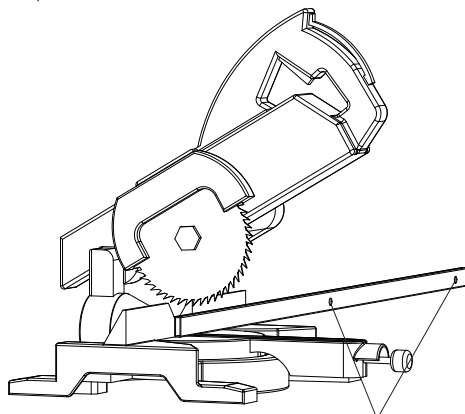
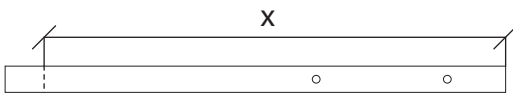
31

Mark the final dimension on the Slider Bar on the opposite side of the Slider Bar.

Cut squarely using a chop saw and finish the edge.



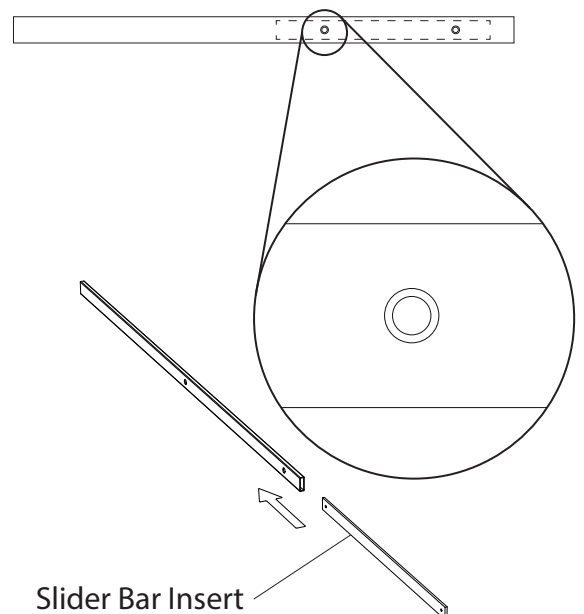
SLIDER BAR IS STAINLESS STEEL



Fixing Holes

32

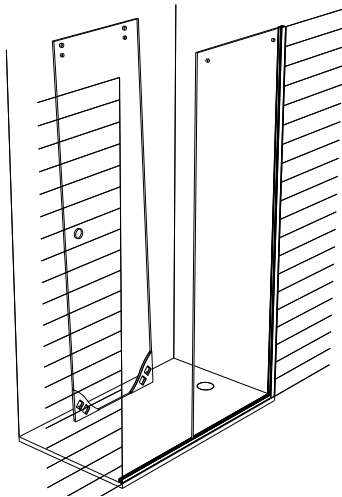
Insert the Slider Bar Insert into the Slider Bar and ensure that the threaded holes in the Slider Bar Insert align with the clearance holes on the Slider Bar.



33

Put the Glass Protectors on the bottom two corners of the Door Panel.

Using purpose built "Glass Lifters", position the Door Panel inside the Enclosure and securely rest the Panel against the back wall.

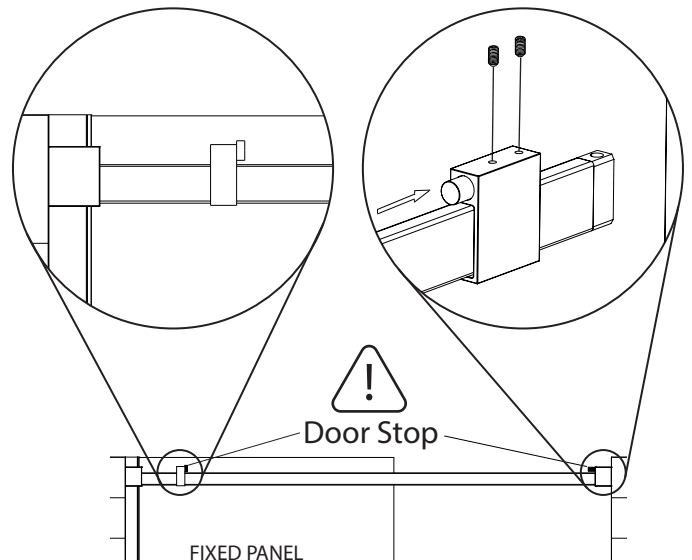


34

Slide the Collar over the Wall Bracket and fix in place.



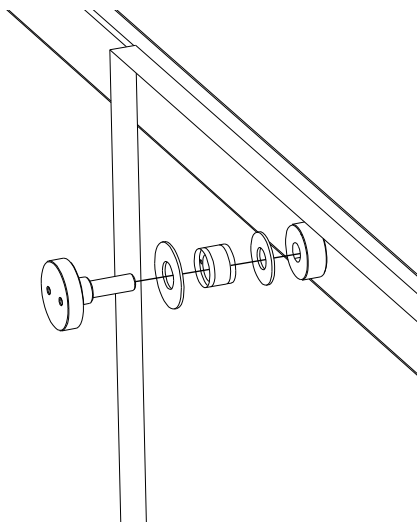
Ensure the Door Stops are positioned and orientated as shown before installing the bar. The stops will be adjusted in a later step.



35

Fix the Inline Panel to the Slider Bar by using the supplied Fixed Panel Fixings.

Use the supplied Pig Nose Adapter to fix in place.

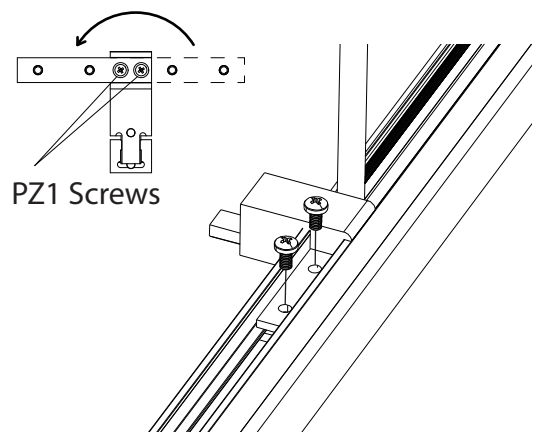


36

Install the Bottom Door Guide to the Underframe by fixing the supplied screws into the Bottom Door Guide Plate.

Ensure that the Bottom Door Guide butts up against the Inline Panel.

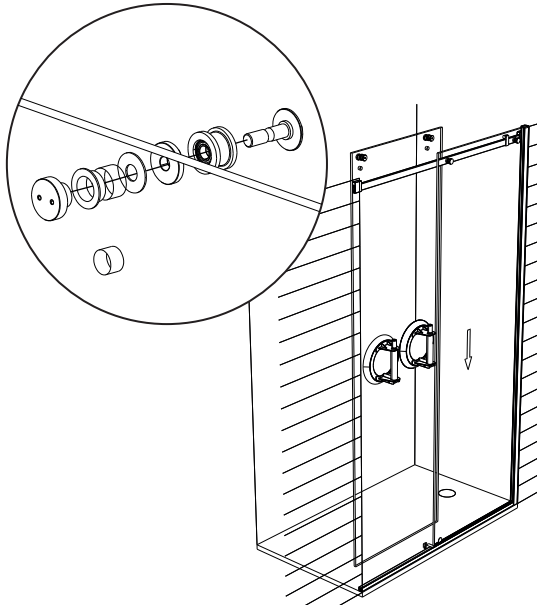
Your Guide may be fully assembled. Rotate the Fixing Plate if needed using the 2x PZ1 screws.



37

Use the Pig Nose Adapter to fix the Top Rollers to the Door.

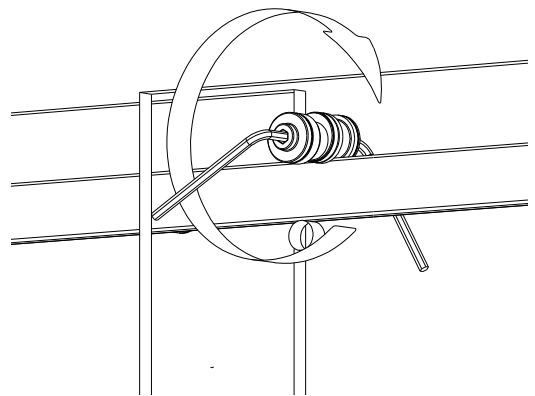
Using purpose built "Glass Lifters", carefully position the Door Panel on the Slider.



38

Ensure that the Door is level by adjusting the eccentric runners.

Use two allen keys and the supplied Pig Nose Adapter to adjust.

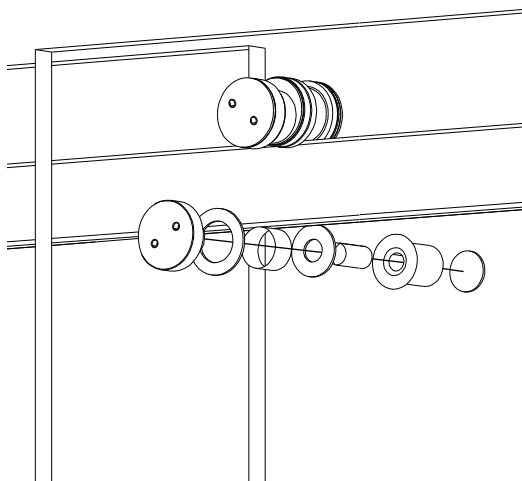


39

Use the supplied Pig Nose Adapter to fix the Bottom Door Retainers in place.



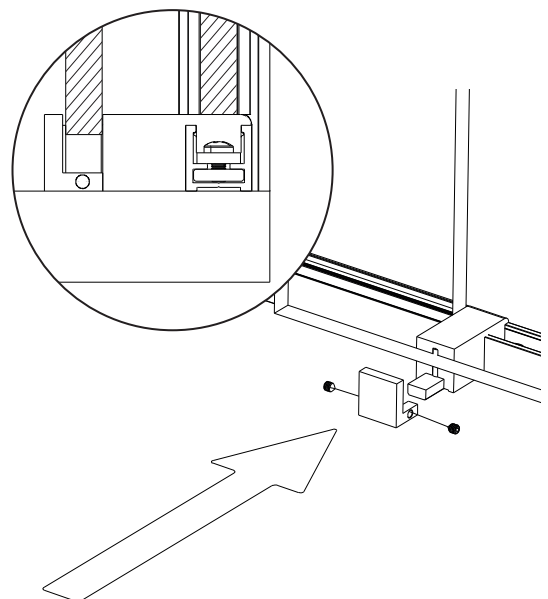
Adjust the Retainers under the Slider Bar so the door is safely locked in.



40

Fix the Bottom Door Guide bracket in place using the supplied Grub Screws.

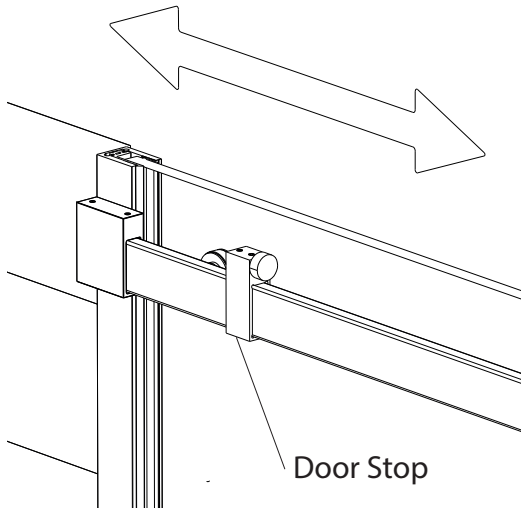
Ensure that the Bottom Door Guide Bracket is lightly touching the Door before fixing in place.



41

Adjust the Door Stop to ensure that the Door does not travel too far. Pay particular attention to the Handle (if supplied) to ensure that it does not clash with the Fixed Inline Panel.

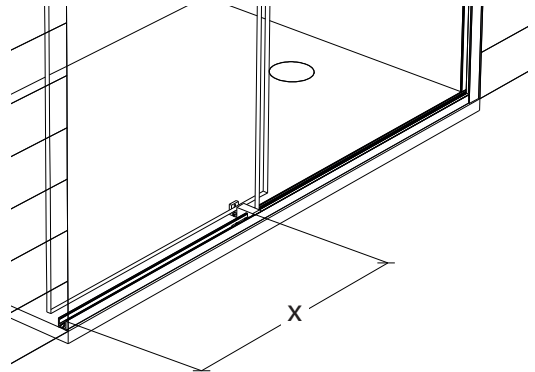
Fix in place by tightening the Grub Screws located on top of the Door Stop.



42

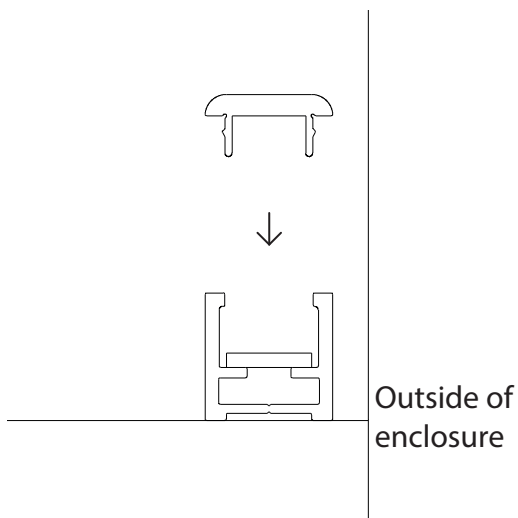
Measure the distance between the wall and the edge of the Bottom Door Guide.

Mark and cut the Underframe Top.



43

Snap the Underframe Top on to the Underframe.



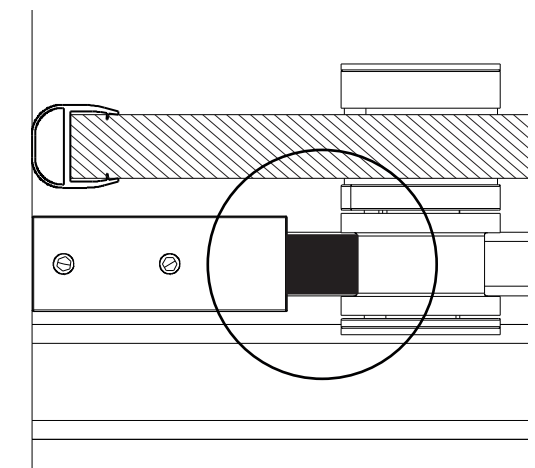
44

Attach the Glass to Wall Bubble Seal to the Door.

Leave the Seal oversized.



Screw IN or OUT the rubber stop until the door stops with sufficient pressure on the Bubble Seal.



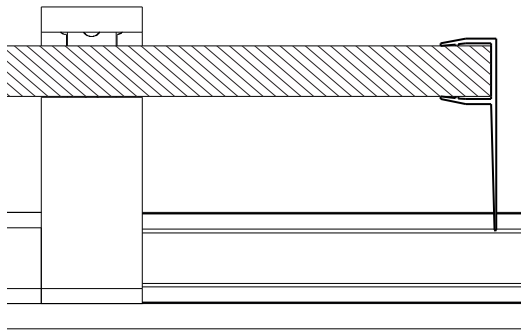
45

Push both Vertical Seals down as far as they can go. With a straight edge, mark where the Seals will be trimmed.

Mark the Glass to Glass Slider Seal just below the Slider Bar.

Remove the Seals and trim with a fine toothed hacksaw.

Replace the Seals.



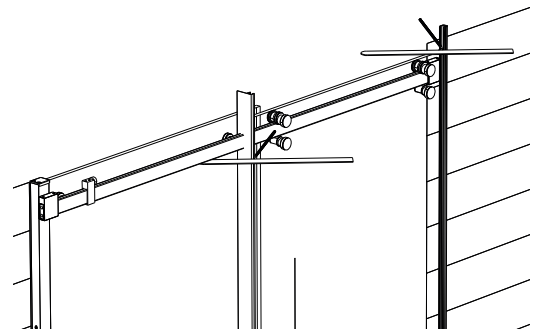
46

Push both Vertical Seals down as far as they can go. With a straight edge, mark where the Seals will be trimmed.

Mark the Glass to Glass Slider Seal just below the Slider Bar.

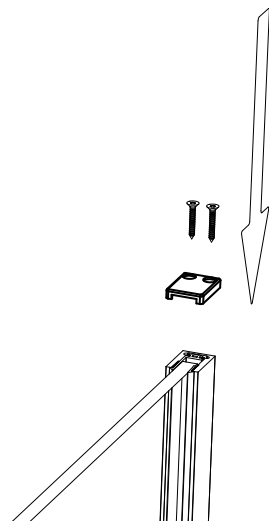
Remove the Seals and trim with a fine toothed hacksaw.

Replace the Seals.



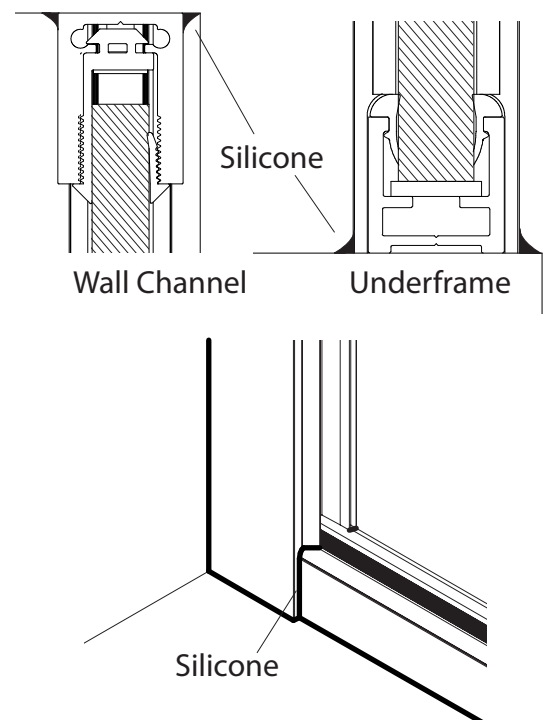
47

Apply the Wall Profile End Cap to the top of the Wall Profile and fix in place using self tapping screws.



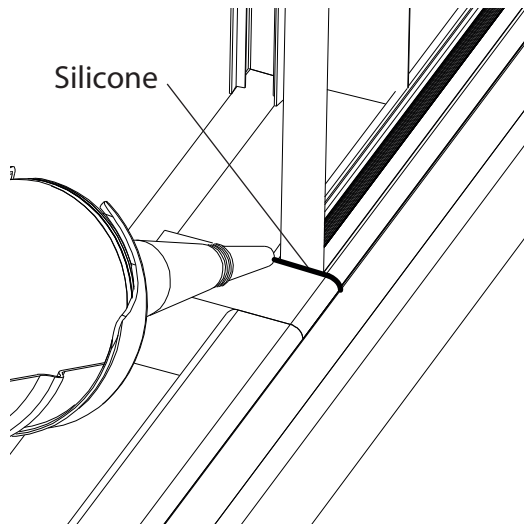
48

Apply silicone sealant along the wall and floor, all around the outside of the Underframe and Wall Profiles.



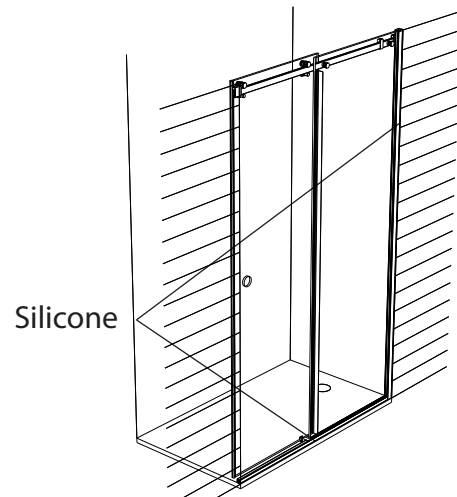
49

Apply silicone to the edges of the Underframe Top where it meets the Glass Inline Panel and the wall.



50

Check silicone has been applied to all the below outside areas.



51

Check silicone has been applied to all the below inside areas.

Let the silicone sealant cure for 24 hours.

