

# Installation Manual

-Jaxikit-Bidet set



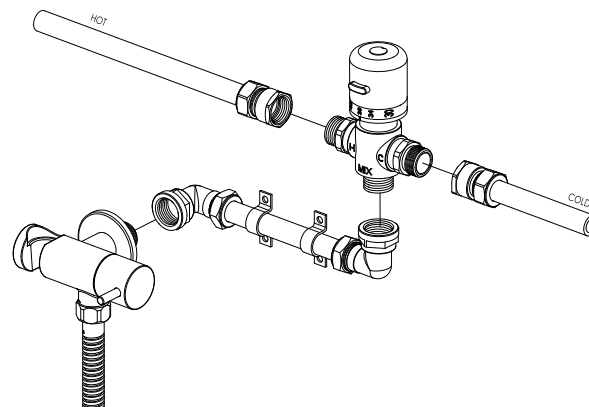
## Installation Guide

The Blending Valve can be positioned discreetly for easy access. Once the temperature has been set then it is rarely necessary for any further adjustment. If repeated adjustment is required then Jaxikit MAXI is available with a Blending Valve for panel mounting with faceplate.

The mixed outlet pipe from the Blending Valve to the Outlet Tap should be firmly fixed for rigidity when in use.

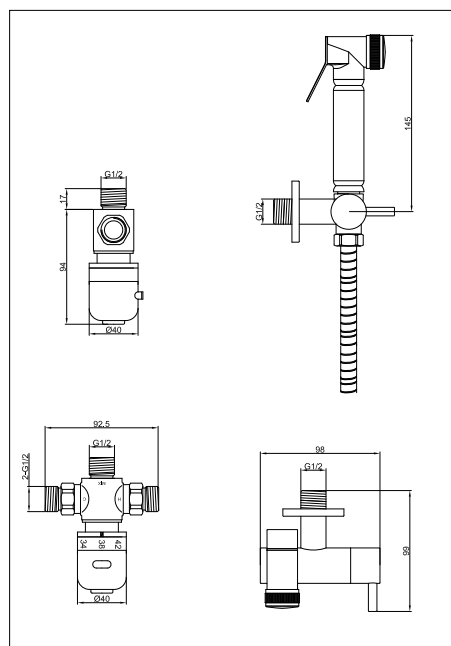
The Outlet Tap/Bracket can be mounted on a panel and secured with a Backnut or fitting depending on panel depth.

It is recommended that the panel is not relied upon for rigidity.

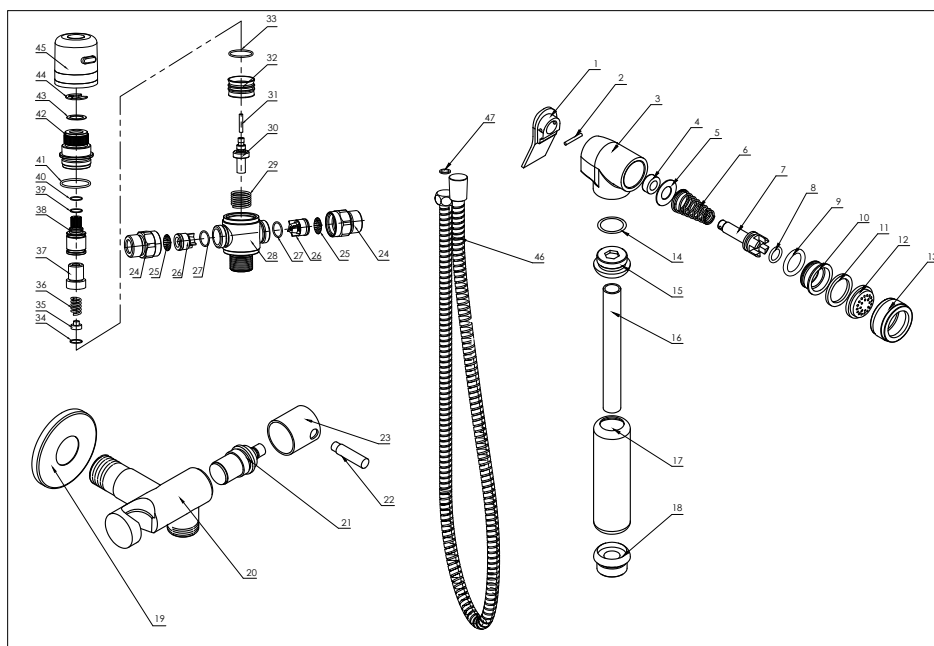


**THE OUTLET TAP LEVER MUST BE TURNED OFF BETWEEN USES**

## Explosive drawing



## Explosive drawing



## Operation Notice

- 1.The work condition for use of this product is cold water 4-29°C, hot water 55-85°C and water pressure 0.5 bar - 5 bar. To avoid the differential pressure between hot water and cold water, the thermostatic cartridge is preferably under the condition of water pressure 3 bar, hot water 65°C and cold water 15°C.
- 2.Make sure the shower valve is off when no water comes out of it (especially when nobody resides in the house or during the period of decoration or the absence of water).
- 3.When the room temperature drops below 0°C, take necessary measures (such measure as keeping shower valve warm and closing windows) to prevent the shower valve from being frozen or even broken (especially when windows kept open for air ventilation while nobody resides in).
- 4.Do not disassemble the valve unless you are an expert.

## Maintenance

If the water flow is less than normal and temperature control is imprecise after a period of usage. It is often due to the poor water which blocks the small filter net. The cleaning method: At first, turn off the main valve. Unscrew securing nut with an allen key. Making sure not to damage the o-rings. Clean/replace check valve and filters and refit. Dirt in the water will slow down or stop the flow of water .