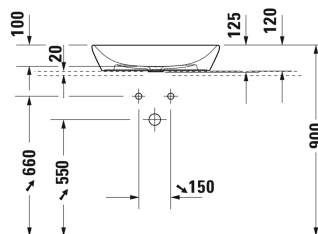
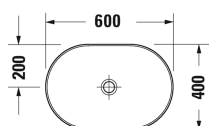


**D-Neo Washbowl # 2372600070**

| &lt; 600 mm &gt; |



Washbowl	Dimension	Weight	Order number
without overflow, without tap platform, fixings included, 600 mm			
<b>Colors</b>			
00 White Alpin			
<b>Variant</b>			
☒	600 x 400 mm	11.000 kilogram	2372600070
<b>Infobox</b>			
When using this siphon in black matt, please see recommendation of black matt accessoires from page XXX			
Sanitary ceramics with the special WonderGliss surface finish will remain clean and attractive-looking for a long time to come. When ordering WonderGliss please add a "1" as eleventh digit to the model number.			
<b>Accessory</b>			
Slotted waste for washbasins without overflow	50 mm	0.300 kilogram	005024
Design Siphon		1.500 kilogram	005036
<b>Suitable products</b>			
Vanity unit wall-mounted 1 pull-out compartment, countertop including one cut-out, for 1 above counter basin central, 800 x 550 mm	800 x 550 mm		KT6694
Vanity unit wall-mounted 1 pull-out compartment, countertop including one cut-out, for 1 above counter basin central, 1000 x 550 mm	1000 x 550 mm		KT6695
Vanity unit wall-mounted 1 pull-out compartment, countertop including one cut-out, for 1 above counter basin central, 1200 x 550 mm	1200 x 550 mm		KT6696
Vanity unit wall-mounted 2 drawers, upper drawer including cut-out for siphon and siphon cover, countertop including one cut-out, for 1 above counter basin central, 800 x 550 mm	800 x 550 mm		KT6654

**D-Neo Washbowl # 2372600070**

| &lt; 600 mm &gt; |

Vanity unit wall-mounted 2 drawers, upper drawer including cut-out for siphon and siphon cover, countertop including one cut-out, for 1 above counter basin central, 1000 x 550 mm	1000 x 550 mm	KT6655
Vanity unit wall-mounted 2 drawers, upper drawer including cut-out for siphon and siphon cover, countertop including one cut-out, for 1 above counter basin central, 1200 x 550 mm	1200 x 550 mm	KT6656
Console 1 console with one cut-out, Width min. see ordering information, Width max 2000 mm, price per section of 100 mm, basic price till 800 mm, 550 mm	550 mm	DS828C
Console 1 console with two cut-outs, Width min. see ordering information, Width max 2000 mm, price per section of 100 mm, basic price till 800 mm, 550 mm	550 mm	DS829C
Vanity unit for console compact 1 pull-out compartment, 600 x 478 mm	600 x 478 mm	DS5300
Vanity unit for console compact 1 pull-out compartment, 700 x 478 mm	700 x 478 mm	DS5301
Vanity unit for console compact 1 pull-out compartment, 800 x 478 mm	800 x 478 mm	DS5302
Vanity unit for console compact 1 pull-out compartment, 900 x 478 mm	900 x 478 mm	DS5303
Vanity unit for console compact 1 pull-out compartment, 1000 x 478 mm	1000 x 478 mm	DS5304
Vanity unit for console compact 2 drawers, upper drawer including cut-out for siphon and siphon cover, 600 x 478 mm	600 x 478 mm	DS5305
Vanity unit for console compact 2 drawers, upper drawer including cut-out for siphon and siphon cover, 700 x 478 mm	700 x 478 mm	DS5306
Vanity unit for console compact 2 drawers, upper drawer including cut-out for siphon and siphon cover, 800 x 478 mm	800 x 478 mm	DS5307
Vanity unit for console compact 2 drawers, upper drawer including cut-out for siphon and siphon cover, 900 x 478 mm	900 x 478 mm	DS5308
Vanity unit for console compact 2 drawers, upper drawer including cut-out for siphon and siphon cover, 1000 x 478 mm	1000 x 478 mm	DS5309
Vanity unit for console 1 pull-out compartment, 600 x 548 mm	600 x 548 mm	DS5310
Vanity unit for console 1 pull-out compartment, 700 x 548 mm	700 x 548 mm	DS5311
Vanity unit for console 1 pull-out compartment, 800 x 548 mm	800 x 548 mm	DS5312
Vanity unit for console 1 pull-out compartment, 900 x 548 mm	900 x 548 mm	DS5313
Vanity unit for console 1 pull-out compartment, 1000 x 548 mm	1000 x 548 mm	DS5314
Vanity unit for console 2 drawers, upper drawer including cut-out for siphon and siphon cover, 600 x 548 mm	600 x 548 mm	DS5315
Vanity unit for console 2 drawers, upper drawer including cut-out for siphon and siphon cover, 700 x 548 mm	700 x 548 mm	DS5316
Vanity unit for console 2 drawers, upper drawer including cut-out for siphon and siphon cover, 800 x 548 mm	800 x 548 mm	DS5317
Vanity unit for console 2 drawers, upper drawer including cut-out for siphon and siphon cover, 900 x 548 mm	900 x 548 mm	DS5318

**D-Neo Washbowl # 2372600070**

|&lt; 600 mm &gt;|

Vanity unit for console 2 drawers, upper drawer including cut-out for siphon and siphon cover, 1000 x 548 mm	1000 x 548 mm	DS5319
Vanity unit for console compact 1 pull-out compartment, 620 x 477 mm	620 x 477 mm	LC5800
Vanity unit for console compact 1 pull-out compartment, 720 x 477 mm	720 x 477 mm	LC5801
Vanity unit for console compact 1 pull-out compartment, 820 x 477 mm	820 x 477 mm	LC5802
Vanity unit for console compact 1 pull-out compartment, 920 x 477 mm	920 x 477 mm	LC5803
Vanity unit for console compact 1 pull-out compartment, 1020 x 477 mm	1020 x 477 mm	LC5804
Vanity unit for console compact 2 drawers, upper drawer including cut-out for siphon and siphon cover, 620 x 477 mm	620 x 477 mm	LC5805
Vanity unit for console compact 2 drawers, upper drawer including cut-out for siphon and siphon cover, 720 x 477 mm	720 x 477 mm	LC5806
Vanity unit for console compact 2 drawers, upper drawer including cut-out for siphon and siphon cover, 820 x 477 mm	820 x 477 mm	LC5807
Vanity unit for console compact 2 drawers, upper drawer including cut-out for siphon and siphon cover, 920 x 477 mm	920 x 477 mm	LC5808
Vanity unit for console compact 2 drawers, upper drawer including cut-out for siphon and siphon cover, 1020 x 477 mm	1020 x 477 mm	LC5809
Vanity unit for console 1 pull-out compartment, 620 x 547 mm	620 x 547 mm	LC5810
Vanity unit for console 1 pull-out compartment, 720 x 547 mm	720 x 547 mm	LC5811
Vanity unit for console 1 pull-out compartment, 820 x 547 mm	820 x 547 mm	LC5812
Vanity unit for console 1 pull-out compartment, 920 x 547 mm	920 x 547 mm	LC5813
Vanity unit for console 1 pull-out compartment, 1020 x 547 mm	1020 x 547 mm	LC5814
Vanity unit for console 2 drawers, upper drawer including cut-out for siphon and siphon cover, 620 x 547 mm	620 x 547 mm	LC5815
Vanity unit for console 2 drawers, upper drawer including cut-out for siphon and siphon cover, 720 x 547 mm	720 x 547 mm	LC5816
Vanity unit for console 2 drawers, upper drawer including cut-out for siphon and siphon cover, 820 x 547 mm	820 x 547 mm	LC5817
Vanity unit for console 2 drawers, upper drawer including cut-out for siphon and siphon cover, 920 x 547 mm	920 x 547 mm	LC5818
Vanity unit for console 2 drawers, upper drawer including cut-out for siphon and siphon cover, 1020 x 547 mm	1020 x 547 mm	LC5819
Vanit unit for console wall-mounted 1 pull-out compartment, 800 x 548 mm	800 x 548 mm	XS4900
Vanit unit for console wall-mounted 1 pull-out compartment, 1000 x 548 mm	1000 x 548 mm	XS4901
Vanit unit for console wall-mounted 1 pull-out compartment, 1200 x 548 mm	1200 x 548 mm	XS4902
Vanit unit for console wall-mounted 2 drawers, upper drawer including cut-out for siphon and siphon cover, 800 x 548 mm	800 x 548 mm	XS4910

**D-Neo Washbowl # 2372600070**

|&lt; 600 mm &gt;|

Vanit unit for console wall-mounted 2 drawers, upper drawer including cut-out for siphon and siphon cover, 1000 x 548 mm	1000 x 548 mm	XS4911
Vanit unit for console wall-mounted 2 drawers, upper drawer including cut-out for siphon and siphon cover, 1200 x 548 mm	1200 x 548 mm	XS4912
Vanit unit for console floor-standing 2 pull-out compartments, integrated base frame legs with height adjustement, 800 x 548 mm	800 x 548 mm	XS4920
Vanit unit for console floor-standing 2 pull-out compartments, integrated base frame legs with height adjustement, 1000 x 548 mm	1000 x 548 mm	XS4921
Vanit unit for console floor-standing 2 pull-out compartments, integrated base frame legs with height adjustement, 1200 x 548 mm	1200 x 548 mm	XS4922
Vanit unit for console wall-mounted 2 pull-out compartments, 1400 x 548 mm	1400 x 548 mm	XS4903 L/R
Vanit unit for console wall-mounted 2 pull-out compartments, 1600 x 548 mm	1600 x 548 mm	XS4904 R/L
Vanit unit for console wall-mounted 4 drawers, 1400 x 548 mm	1400 x 548 mm	XS4913 L/R
Vanit unit for console wall-mounted 4 drawers, 1600 x 548 mm	1600 x 548 mm	XS4914 L/R
Vanit unit for console floor-standing 4 pull-out compartments, integrated base frame legs with height adjustement, 1400 x 548 mm	1400 x 548 mm	XS4923 R/L
Vanit unit for console floor-standing 4 pull-out compartments, integrated base frame legs with height adjustement, 1600 x 548 mm	1600 x 548 mm	XS4924 L/R
Vanit unit for console wall-mounted 2 pull-out compartments, 1400 x 548 mm	1400 x 548 mm	XS4906 B
Vanit unit for console wall-mounted 2 pull-out compartments, 1600 x 548 mm	1600 x 548 mm	XS4907 B
Vanit unit for console wall-mounted 4 drawers, upper drawer including cut-out for siphon and siphon cover, 1400 x 548 mm	1400 x 548 mm	XS4916 B
Vanit unit for console wall-mounted 4 drawers, upper drawer including cut-out for siphon and siphon cover, 1600 x 548 mm	1600 x 548 mm	XS4917 B
Vanit unit for console floor-standing 4 pull-out compartments, integrated base frame legs with height adjustement, 1400 x 548 mm	1400 x 548 mm	XS4926 B
Vanit unit for console floor-standing 4 pull-out compartments, integrated base frame legs with height adjustement, 1600 x 548 mm	1600 x 548 mm	XS4927 B
Console for above counter basin and countertop basin 1 console with one cut-out, price per section of 100 mm, basic price till 800 mm, 45 mm thickness, 550 mm	550 mm	DS102C
Console for above counter basin and countertop basin 1 console with two cut-outs, price per section of 100 mm, basic price till 800 mm, 45 mm thickness, 550 mm	550 mm	DS103C
Console for above counter basin and countertop basin 1 console with one cut-out, price per section of 100 mm, basic price till 800 mm, 30 mm thickness, 550 mm	550 mm	DS106C

**D-Neo Washbowl # 2372600070**

|&lt; 600 mm &gt;|

Console for above counter basin and countertop basin 1 console with two cut-outs, price per section of 100 mm, basic price till 800 mm, 30 mm thickness, 550 mm	550 mm	DS107C
Console for above counter basin and countertop basin 1 console with one cut-out, price per section of 100 mm, basic price till 800 mm, 45 mm thickness, 550 mm	550 mm	LC102C
Console for above counter basin and countertop basin 1 console with two cut-outs, price per section of 100 mm, basic price till 800 mm, 45 mm thickness, 550 mm	550 mm	LC103C
Console for above counter basin and countertop basin 1 console with one cut-out, price per section of 100 mm, basic price till 800 mm, 30 mm thickness, 550 mm	550 mm	LC106C
Console for above counter basin and countertop basin 1 console with two cut-outs, price per section of 100 mm, basic price till 800 mm, 30 mm thickness, 550 mm	550 mm	LC107C
Console for above counter basin and countertop basin compact 1 console with one cut-out, price per section of 100 mm, basic price till 800 mm, 45 mm thickness, 480 mm	480 mm	DS100C
Console for above counter basin and countertop basin compact 1 console with two cut-outs, price per section of 100 mm, basic price till 800 mm, 45 mm thickness, 480 mm	480 mm	DS101C
Console for above counter basin and countertop basin compact 1 console with one cut-out, price per section of 100 mm, basic price till 800 mm, 30 mm thickness, 480 mm	480 mm	DS104C
Console for above counter basin and countertop basin compact 1 console with two cut-outs, price per section of 100 mm, basic price till 800 mm, 30 mm thickness, 480 mm	480 mm	DS105C
Console for above counter basin and countertop basin compact 1 console with one cut-out, price per section of 100 mm, basic price till 800 mm, 45 mm thickness, 480 mm	480 mm	LC100C
Console for above counter basin and countertop basin compact 1 console with two cut-outs, price per section of 100 mm, basic price till 800 mm, 45 mm thickness, 480 mm	480 mm	LC101C
Console for above counter basin and countertop basin compact 1 console with one cut-out, price per section of 100 mm, basic price till 800 mm, 30 mm thickness, 480 mm	480 mm	LC104C
Console for above counter basin and countertop basin compact 1 console with two cut-outs, price per section of 100 mm, basic price till 800 mm, 30 mm thickness, 480 mm	480 mm	LC105C
Vanity unit wall-mounted 1 pull-out compartment, 1 console with one cut-out, 800 x 550 mm	800 x 550 mm	WT4975
Vanity unit wall-mounted 1 pull-out compartment, 1 console with one cut-out, 1000 x 550 mm	1000 x 550 mm	WT4976
Vanity unit wall-mounted 1 pull-out compartment, 1 console with one cut-out, 1300 x 550 mm	1300 x 550 mm	WT4977 L/R/M
Vanity unit wall-mounted 1 pull-out compartment, 1 console with two cut-outs, 1300 x 550 mm	1300 x 550 mm	WT4978 B
Vanity unit wall-mounted 2 drawers, upper drawer including cut-out for siphon and siphon cover, 1 console with one cut-out, 800 x 550 mm	800 x 550 mm	WT4985

**D-Neo Washbowl # 2372600070**

| &lt; 600 mm &gt; |

Vanity unit wall-mounted 2 drawers, upper drawer including cut-out for siphon and siphon cover, 1 console with one cut-out, 1000 x 550 mm	1000 x 550 mm	WT4986
Vanity unit wall-mounted 2 drawers, upper drawer including cut-out for siphon and siphon cover, 1 console with one cut-out, 1300 x 550 mm	1300 x 550 mm	WT4987 L/R/M
Vanity unit wall-mounted 2 drawers, upper drawer including cut-out for siphon and siphon cover, 1 console with two cut-outs, 1300 x 550 mm	1300 x 550 mm	WT4988 B
Vanity unit wall-mounted 1 pull-out compartment, 1 console with one cut-out, 800 x 550 mm	800 x 550 mm	WT4980
Vanity unit wall-mounted 1 pull-out compartment, 1 console with one cut-out, 1000 x 550 mm	1000 x 550 mm	WT4981
Vanity unit wall-mounted 1 pull-out compartment, 1 console with one cut-out, 1300 x 550 mm	1300 x 550 mm	WT4982 L/R/M
Vanity unit wall-mounted 1 pull-out compartment, 1 console with two cut-outs, 1300 x 550 mm	1300 x 550 mm	WT4983 B
Vanity unit wall-mounted 2 drawers, upper drawer including cut-out for siphon and siphon cover, 1 console with one cut-out, 800 x 550 mm	800 x 550 mm	WT4990
Vanity unit wall-mounted 2 drawers, upper drawer including cut-out for siphon and siphon cover, 1 console with one cut-out, 1000 x 550 mm	1000 x 550 mm	WT4991
Vanity unit wall-mounted 2 drawers, upper drawer including cut-out for siphon and siphon cover, 1 console with one cut-out, 1300 x 550 mm	1300 x 550 mm	WT4992 L/R/M
Vanity unit wall-mounted 2 drawers, upper drawer including cut-out for siphon and siphon cover, 1 console with two cut-outs, 1300 x 550 mm	1300 x 550 mm	WT4993 B
Vanity unit wall-mounted 1 pull-out compartment, 1 console with one cut-out, 800 x 550 mm	800 x 550 mm	DE4947
Vanity unit wall-mounted 1 pull-out compartment, 1 console with one cut-out, 1000 x 550 mm	1000 x 550 mm	DE4948
Vanity unit wall-mounted 1 pull-out compartment, 1 console with one cut-out, 1200 x 550 mm	1200 x 550 mm	DE4949
Vanity unit wall-mounted 2 pull-out compartments, 1 opened shelf incl. wooden floor, 1 countertop with one cut-out or two cut-outs, 1400 x 550 mm	1400 x 550 mm	DE4950 B/L/R
Vanity unit wall-mounted 1 drawer, 1 pull-out compartment, upper drawer including cut-out for siphon and siphon cover, 1 console with one cut-out, 800 x 550 mm	800 x 550 mm	DE4967
Vanity unit wall-mounted 1 drawer, 1 pull-out compartment, upper drawer including cut-out for siphon and siphon cover, 1 console with one cut-out, 1000 x 550 mm	1000 x 550 mm	DE4968
Vanity unit wall-mounted 1 drawer, 1 pull-out compartment, upper drawer including cut-out for siphon and siphon cover, 1 console with one cut-out, 1200 x 550 mm	1200 x 550 mm	DE4969
Vanity unit wall-mounted 2 drawers, 2 pull-out compartments, drawer beneath basin including cut-out for siphon and siphon cover, 1 opened shelf incl. wooden floor, 1 countertop with one cut-out or two cut-outs, 1400 x 550 mm	1400 x 550 mm	DE4970 B/L/R

**D-Neo Washbowl # 2372600070**

|&lt; 600 mm &gt;|

Vanity unit wall-mounted 1 open compartment on the right side, 1 console with one cut-out, 1000 x 550 mm	1000 x 550 mm	DE4929
Vanity unit wall-mounted compact 1 open compartment on the right side, 1 console with one cut-out, 1000 x 480 mm	1000 x 480 mm	DE4919
Vanity unit wall-mounted compact 1 open compartment on the left side, 1 console with one cut-out, 1000 x 480 mm	1000 x 480 mm	DE4939
Vanity unit wall-mounted 1 open compartment on the left side, 1 console with one cut-out, 1000 x 550 mm	1000 x 550 mm	DE4959
Vanity unit wall-mounted 2 drawers, upper drawer including cut-out for siphon and siphon cover, 1 console with one cut-out, 800 x 550 mm	800 x 550 mm	XV4770
Vanity unit wall-mounted 2 drawers, upper drawer including cut-out for siphon and siphon cover, 1 console with one cut-out, 1000 x 550 mm	1000 x 550 mm	XV4771
Vanity unit wall-mounted 2 drawers, upper drawer including cut-out for siphon and siphon cover, 1 console with one cut-out, 1200 x 550 mm	1200 x 550 mm	XV4772
Vanity unit wall-mounted 4 drawers, upper drawer including cut-out for siphon and siphon cover, 1 console with one cut-out, 1400 x 550 mm	1400 x 550 mm	XV4773 R/L
Vanity unit wall-mounted 4 drawers, upper drawer including cut-out for siphon and siphon cover, 1 console with one cut-out, 1600 x 550 mm	1600 x 550 mm	XV4775 L/R
Vanity unit wall-mounted 4 drawers, upper drawer including cut-out for siphon and siphon cover, 1 console with two cut-outs, 1400 x 550 mm	1400 x 550 mm	XV4774 B
Vanity unit wall-mounted 4 drawers, upper drawer including cut-out for siphon and siphon cover, 1 console with two cut-outs, 1600 x 550 mm	1600 x 550 mm	XV4776 B
Vanity unit wall-mounted 1 pull-out compartment, 1 console with one cut-out, 800 x 550 mm	800 x 550 mm	K24885
Vanity unit wall-mounted 1 pull-out compartment, 1 console with one cut-out, 1000 x 550 mm	1000 x 550 mm	K24886
Vanity unit wall-mounted 1 pull-out compartment, 1 console with one cut-out, 1200 x 550 mm	1200 x 550 mm	K24887
Vanity unit wall-mounted 2 pull-out compartments, 1 countertop with one cut-out or two cut-outs, 1400 x 550 mm	1400 x 550 mm	K24888 B/L/R
Vanity unit wall-mounted 2 pull-out compartments, 1 countertop with one cut-out or two cut-outs, 1600 x 550 mm	1600 x 550 mm	K24889 L/B/R
Vanity unit wall-mounted 2 drawers, upper drawer including cut-out for siphon and siphon cover, 1 console with one cut-out, 800 x 550 mm	800 x 550 mm	K24895
Vanity unit wall-mounted 2 drawers, upper drawer including cut-out for siphon and siphon cover, 1 console with one cut-out, 1000 x 550 mm	1000 x 550 mm	K24896

**D-Neo Washbowl # 2372600070**

|&lt; 600 mm &gt;|

Vanity unit wall-mounted 2 drawers, upper drawer including cut-out for siphon and siphon cover, 1 console with one cut-out, 1200 x 550 mm	1200 x 550 mm	K24897
Vanity unit wall-mounted 4 drawers, 1 countertop with one cut-out or two cut-outs, 1400 x 550 mm	1400 x 550 mm	K24898 B/L/R
Vanity unit wall-mounted 4 drawers, 1 countertop with one cut-out or two cut-outs, 1600 x 550 mm	1600 x 550 mm	K24899 B/L/R
Vanity unit wall-mounted 2 pull-out compartments, 1 console with one cut-out, 1600 x 550 mm	1600 x 550 mm	WT4864 L/R
Vanity unit wall-mounted 2 pull-out compartments, 1 console with two cut-outs, 1600 x 550 mm	1600 x 550 mm	WT4865 B
Vanity unit wall-mounted 2 pull-out compartments, 1 console with one cut-out, 1600 x 550 mm	1600 x 550 mm	WT4890 L/R
Vanity unit wall-mounted 2 pull-out compartments, 1 console with two cut-outs, 1600 x 550 mm	1600 x 550 mm	WT4891 B
Vanity unit wall-mounted 4 drawers, 1 console with one cut-out, 1600 x 550 mm	1600 x 550 mm	WT4867 L/R
Vanity unit wall-mounted 1 console with two cut-outs, upper drawer including cut-out for siphon and siphon cover, 4 drawers, 1600 x 550 mm	1600 x 550 mm	WT4868 B
Vanity unit wall-mounted 4 drawers, 1 console with one cut-out, 1600 x 550 mm	1600 x 550 mm	WT4995 L/R
Vanity unit wall-mounted 1 console with two cut-outs, upper drawer including cut-out for siphon and siphon cover, 4 drawers, 1600 x 550 mm	1600 x 550 mm	WT4996 B
Vanity unit wall-mounted 1 drawer, 1 pull-out compartment, upper drawer including cut-out for siphon and siphon cover, 1 console with one cut-out, 820 x 550 mm	820 x 550 mm	LC4880
Vanity unit wall-mounted 1 drawer, 1 pull-out compartment, upper drawer including cut-out for siphon and siphon cover, 1 console with one cut-out, 1020 x 550 mm	1020 x 550 mm	LC4881
Vanity unit wall-mounted 1 drawer, 1 pull-out compartment, upper drawer including cut-out for siphon and siphon cover, 1 console with one cut-out, 1220 x 550 mm	1220 x 550 mm	LC4882
Vanity unit wall-mounted 2 drawers, 2 pull-out compartments, 1 countertop with one cut-out left or right, 1420 x 550 mm	1420 x 550 mm	LC4870 L/R
Vanity unit wall-mounted 2 drawers, 2 pull-out compartments, 1 countertop with one cut-out left or right, 1620 x 550 mm	1620 x 550 mm	LC4871 L/R
Vanity unit wall-mounted 2 drawers, 2 pull-out compartments, upper drawer including cut-out for siphon and siphon cover, 1 console with two cut-outs, 1420 x 550 mm	1420 x 550 mm	LC4872 B
Vanity unit wall-mounted 2 drawers, 2 pull-out compartments, upper drawer including cut-out for siphon and siphon cover, 1 console with two cut-outs, 1620 x 550 mm	1620 x 550 mm	LC4873 B
Vanity unit wall-mounted 2 drawers, 2 pull-out compartments, 1 console with one cut-out, 1220 x 550 mm	1220 x 550 mm	LC4874
Vanity unit wall-mounted 2 drawers, 2 pull-out compartments, 1 console with one cut-out, 1420 x 550 mm	1420 x 550 mm	LC4875



**D-Neo Washbowl # 2372600070**

| &lt; 600 mm &gt; |

Vanity unit wall-mounted 2 drawers, 2 pull-out compartments, 1 console with one cut-out, 1220 x 550 mm	1220 x 550 mm	LC4876
Vanity unit wall-mounted 2 drawers, 2 pull-out compartments, 1 console with one cut-out, 1420 x 550 mm	1420 x 550 mm	LC4877
<b>Recommended faucets</b>		
Single lever basin mixer for concealed installation normal spray, ceramic cartridge, aerator adjustable, connection type: basic set for concealed installation, includes: visible parts, recommended operating pressure 1 - 5 bar, Projection 174 mm,		C11070003
Single lever basin mixer XL ceramic cartridge, Projection 166 mm, flexible connection hoses 3/8", aerator adjustable, normal spray, recommended operating pressure 1 - 5 bar, without pop-up waste set,		C11040002
Single lever basin mixer for concealed installation normal spray, ceramic cartridge, aerator adjustable, connection type: basic set for concealed installation, includes: visible parts, recommended operating pressure 1 - 5 bar, Projection 225 mm,		C11070004
Single lever basin mixer XL ceramic cartridge, projection 180 mm, flexible connection hoses 3/8", normal spray, chrome, maximum temperature can be adjusted on installation, recommended operating pressure 1 - 5 bar, with pop-up waste set,		A11040001
Single lever basin mixer XL ceramic cartridge, projection 180 mm, flexible connection hoses 3/8", normal spray, chrome, maximum temperature can be adjusted on installation, recommended operating pressure 1 - 5 bar, without pop-up waste set,		A11040002
Single lever basin mixer L ceramic cartridge, Projection 139 mm, flexible connection hoses 3/8", aerator adjustable, normal spray, chrome, maximum temperature can be adjusted on installation, recommended operating pressure 1 - 5 bar, with pop-up waste set,		DE1030001
Single lever basin mixer L ceramic cartridge, Projection 139 mm, flexible connection hoses 3/8", aerator adjustable, normal spray, chrome, maximum temperature can be adjusted on installation, recommended operating pressure 1 - 5 bar, without pop-up waste set,		DE1030002
Single lever basin mixer L ceramic cartridge, projection 160 mm, aerator with Easy-clean sprayplate, normal spray, connection size DN15, recommended operating pressure 1 - 5 bar, without pop-up waste set,		CE1030002
Single lever basin mixer for concealed installation normal spray, ceramic cartridge, aerator with Easy-clean sprayplate, connection type: basic set for concealed installation, recommended operating pressure 1 - 5 bar, Projection 200 mm,		CE1070004
Single lever basin mixer XL ceramic cartridge, projection 176 mm, aerator with Easy-clean sprayplate, flow rate 5,0 l/min (3 bar), normal spray, connection size DN15, recommended operating pressure 1 - 5 bar, without pop-up waste set,		WA1040002

Single lever basin mixer for concealed installation normal spray, ceramic cartridge, aerator with Easy-clean sprayplate, flow rate 5,0 l/min (3 bar), connection type: basic set for concealed installation, includes: visible parts, recommended operating pressure 1 - 5 bar, projection 202 mm,	WA1070004
Single lever basin mixer XL ceramic cartridge, projection 180 mm, aerator with Easy-clean sprayplate, flow rate 5,0 l/min (3 bar), normal spray, recommended operating pressure 1 - 5 bar, without pop-up waste set,	MH1040002
Single lever basin mixer for concealed installation normal spray, ceramic cartridge, aerator with Easy-clean sprayplate, flow rate 5,0 l/min (3 bar), connection type: basic set for concealed installation, recommended operating pressure 1 - 5 bar,	MH1070004

*All drawings contain the necessary measurements which are subject to standard tolerances. They are stated in mm and are non-binding. Exact measurements, in particular for customised installation scenarios, can only be taken from the finished piece.*