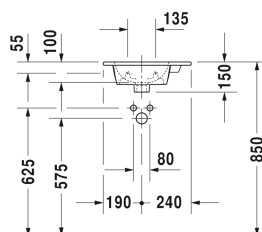
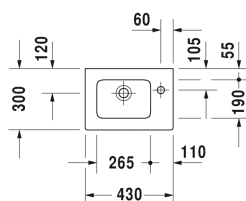


**ME by Starck Handrinse basin, furniture handrinse basin #**  
 072343..00 / 072343..00 / 072343..41 / 072343..41

| < 430 mm > |



Handrinse basin, furniture handrinse basin	Dimension	Weight	Order number
with tap platform, 430 mm			
<b>Colors</b>			
00 White Alpin 32 White Satin Matt			
<b>Variant</b>			
● with overflow	430 x 300 mm	6.800 kilogram	072343..00
● with overflow	430 x 300 mm	6.800 kilogram	072343..00
● without overflow	430 x 300 mm	6.800 kilogram	072343..41
● without overflow	430 x 300 mm	6.800 kilogram	072343..41
Sanitary ceramics with the special WonderGliss surface finish will remain clean and attractive-looking for a long time to come. When ordering WonderGliss please add a "1" as eleventh digit to the model number.			
<b>Suitable products</b>			
Vanity unit wall-mounted 1 door, for ME by Starck # 072343, 420 x 294 mm	420 x 294 mm		LC6272 L/R
Vanity unit floor-standing 1 door, 1 glass shelf, for ME by Starck # 072343, 420 x 294 mm	420 x 294 mm		LC6273 L/R
Vanity unit wall-mounted 1 door, for ME by Starck # 072343, 400 x 285 mm	400 x 285 mm		KT6417 L/R
Vanity unit wall-mounted 1 door, for ME by Starck # 072343, 420 x 289 mm	420 x 289 mm		BR4000 L/R
Vanity unit floor-standing 1 door, 1 glass shelf, for ME by Starck # 072343, 420 x 289 mm	420 x 289 mm		BR4400 L/R
Vanity unit wall-mounted 1 door, for ME by Starck # 072343, 410 x 289 mm	410 x 289 mm		XS4170 R/L
Vanity unit floor-standing 1 door, integrated base frame legs with height adjustment, for ME by Starck # 072343, 410 x 289 mm	410 x 289 mm		XS4440 L/R
Vanity unit wall-mounted 1 door, for ME by Starck # 072343, 410 x 290 mm	410 x 290 mm		XV4024 L/R

**ME by Starck Handrinse basin, furniture handrinse basin #**  
 072343..00 / 072343..00 / 072343..41 / 072343..41

|< 430 mm >|

Vanity unit floor-standing 1 door, for ME by Starck # 072343, 410 x 290 mm	410 x 290 mm	XV4480 L/R
Vanity unit wall-mounted 1 door, for ME by Starck # 072343, 410 x 274 mm	410 x 274 mm	DE4259 L/R
Vanity unit wall-mounted 1 door, for ME by Starck # 072343, 410 x 292 mm	410 x 292 mm	K25060 L/R
<b>Recommended faucets</b>		
Single lever basin mixer S ceramic cartridge, Projection 101 mm, flexible connection hoses 3/8", aerator adjustable, normal spray, chrome, maximum temperature can be adjusted on installation, recommended operating pressure 1 - 5 bar, with pop-up waste set,		B21010001
Single lever basin mixer S ceramic cartridge, Projection 101 mm, flexible connection hoses 3/8", aerator adjustable, normal spray, chrome, maximum temperature can be adjusted on installation, recommended operating pressure 1 - 5 bar, without pop-up waste set,		B11010002
Single lever basin mixer S ceramic cartridge, Projection 101 mm, flexible connection hoses 3/8", aerator adjustable, normal spray, chrome, maximum temperature can be adjusted on installation, recommended operating pressure 1 - 5 bar, with pop-up waste set,		B11010001
Single lever basin mixer S ceramic cartridge, Projection 101 mm, flexible connection hoses 3/8", aerator adjustable, normal spray, chrome, maximum temperature can be adjusted on installation, recommended operating pressure 1 - 5 bar, without pop-up waste set,		B21010002
Single lever basin mixer S ceramic cartridge, Projection 94 mm, flexible connection hoses 3/8", aerator adjustable, normal spray, chrome, maximum temperature can be adjusted on installation, recommended operating pressure 1 - 5 bar, with pop-up waste set,		DE1010001
Single lever basin mixer S ceramic cartridge, Projection 94 mm, flexible connection hoses 3/8", aerator adjustable, normal spray, chrome, maximum temperature can be adjusted on installation, recommended operating pressure 1 - 5 bar, without pop-up waste set,		DE1010002
Single lever basin mixer S FreshStart ceramic cartridge, in centre position cold water, Projection 94 mm, flexible connection hoses 3/8", aerator adjustable, normal spray, chrome, maximum temperature can be adjusted on installation, recommended operating pressure 1 - 5 bar, with pop-up waste set,		DE1011001
Single lever basin mixer S FreshStart ceramic cartridge, in centre position cold water, Projection 94 mm, flexible connection hoses 3/8", aerator adjustable, normal spray, chrome, maximum temperature can be adjusted on installation, recommended operating pressure 1 - 5 bar, without pop-up waste set,		DE1011002

**ME by Starck Handrinse basin, furniture handrinse basin #**  
**072343..00 / 072343..00 / 072343..41 / 072343..41**

|< 430 mm >|

Single lever basin mixer S FreshStart ceramic cartridge, in centre position cold water, projection 110 mm, flexible connection hoses 3/8", flow rate 5,0 l/min (3 bar), normal spray, connection size DN15, maximum temperature can be adjusted on installation, recommended operating pressure 1 - 5 bar, with pop-up waste set,	TU1011001
Single lever basin mixer S FreshStart ceramic cartridge, in centre position cold water, projection 110 mm, flexible connection hoses 3/8", flow rate 5,0 l/min (3 bar), normal spray, connection size DN15, maximum temperature can be adjusted on installation, recommended operating pressure 1 - 5 bar, without pop-up waste set,	TU1011002
Single lever basin mixer S ceramic cartridge, projection 110 mm, flexible connection hoses 3/8", flow rate 5,0 l/min (3 bar), normal spray, connection size DN15, maximum temperature can be adjusted on installation, recommended operating pressure 1 - 5 bar, with pop-up waste set,	TU1010001
Single lever basin mixer S ceramic cartridge, projection 110 mm, flexible connection hoses 3/8", flow rate 5,0 l/min (3 bar), normal spray, connection size DN15, maximum temperature can be adjusted on installation, recommended operating pressure 1 - 5 bar, without pop-up waste set,	TU1010002
Single lever basin mixer M ceramic cartridge, projection 122 mm, aerator with Easy-clean sprayplate, flow rate 5,0 l/min (3 bar), normal spray, connection size DN15, recommended operating pressure 1 - 5 bar, with pop-up waste set,	WA1020001
Single lever basin mixer M ceramic cartridge, projection 122 mm, aerator with Easy-clean sprayplate, flow rate 5,0 l/min (3 bar), normal spray, connection size DN15, recommended operating pressure 1 - 5 bar, without pop-up waste set,	WA1020002
Single lever basin mixer M FreshStart connection size DN15,	WA1021001
Single lever basin mixer M FreshStart connection size DN15,	WA1021002
Single lever basin mixer M MinusFlow connection size DN15,	WA1022001
Single lever basin mixer M MinusFlow connection size DN15,	WA1022002

*All drawings contain the necessary measurements which are subject to standard tolerances. They are stated in mm and are non-binding. Exact measurements, in particular for customised installation scenarios, can only be taken from the finished piece.*