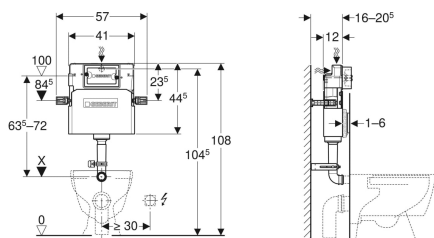


Geberit Delta concealed cistern 12 cm, 6 / 3 litres



Example image



Application purposes

- For drywall construction
- For installation in part or room-height prewall installations
- For installation in room-height installation walls
- For floor-standing WCs

Characteristics

- Concealed cistern with front actuation
- Concealed cistern, fully insulated against condensation
- Cistern fulfils standard requirements in accordance with EN 14055, Class II

- Immediate post flush possible with factory setting
- Flush bend fitted
- Water supply connection on the rear or top centre
- Connection hose on angle stop valve can be attached without tools

Technical data

Flow pressure	0.1-10 bar
Maximum operating temperature, water	25 °C
Flush volume, factory setting	5.8 and 3 l
Flush volume small, adjustment range	3-4 l

Scope of delivery

- Angle stop valve R 1/2", compatible with MF, with adapter ring
- Protection box for service opening, made of polystyrene foam
- 2 distance bolts
- Flush bend 90°
- Protection plug
- Fastening for flush bend
- Flush bend extension, \varnothing 45 mm
- Cup for flush volume reduction 4.0 / 2.6 l
- 2 fixing brackets
- Fastening material

Art. no.	B	H	T
109.105.00.1	41 cm	44.5 cm	12 cm

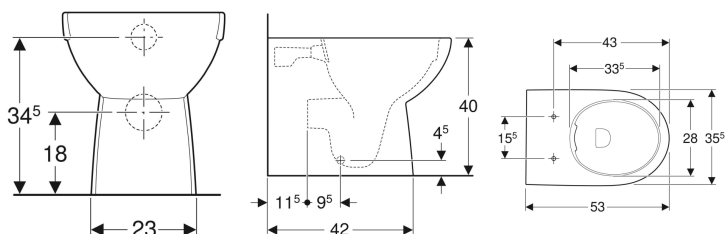


- Flush valve features settings to enable either a 6 l and 3 l flush or a 4.5 l and 3 l flush. Note: must be used with pans designed for low volume flush
- The cistern can be operated with used water (rainwater) provided it is passed through a filter system first

Geberit Selnova floor-standing WC, washdown, back-to-wall, horizontal or vertical outlet, semi-shrouded, Rimfree



Example image



Characteristics

- Back-to-wall
- Washdown WC
- Floor-standing
- Rimfree
- Type 1, full flush volume 6 / 5 / 4 l, in accordance with EN 997

- Horizontal or vertical outlet
- Type 2 in accordance with EN 997
- Semi-shrouded
- Hidden fastening

Technical data

Product material | Vitreous china

Scope of delivery

- WC ceramic appliance
- Fastening material

To order additionally

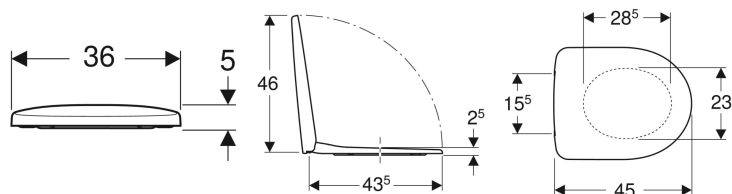
- WC seat

Art. no.	Colour / surface	B	H	T
500.393.01.7	white	35.5 cm	40 cm	53 cm

Geberit Selnova WC seat, fastening from above



Example image



Characteristics

- Overlapping WC lid
- Hinges made of metal

Technical data

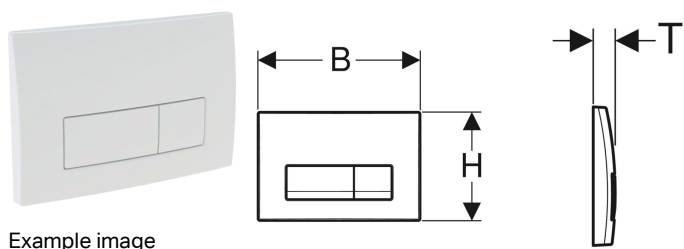
Product material	Duroplast
Fastening distance	15.5 cm

Scope of delivery

- WC seat

Art. no.	Colour / surface	Quick-release hinges	Soft-closing mechanism	Fastening	Hinge material
500.333.01.1	white / glossy	no	yes	from above	Brass chrome-plated
500.337.01.1	white / glossy	no	no	from above	Stainless steel
500.335.01.1	white / glossy	yes	yes	from above	Brass chrome-plated

Geberit Delta50 flush plate for dual flush



Example image

Application purposes

- For flush actuation with Delta concealed cisterns

Characteristics

- Front actuation

Scope of delivery

- Mounting frame
- 2 actuator rods

Technical data

Actuation force | < 20 N

- Fastening material

Art. no.	Colour / surface	Material designation	B	H	T	
115.105.11.5	white	Plastic	24.6 cm	16.4 cm	2.3 cm	New
115.105.21.5	gloss chrome-plated	Plastic	24.6 cm	16.4 cm	2.3 cm	New
115.105.46.5	matt chrome-plated	Plastic	24.6 cm	16.4 cm	2.3 cm	New

Accessories

- Geberit extension set for Delta and Twinline concealed cisterns