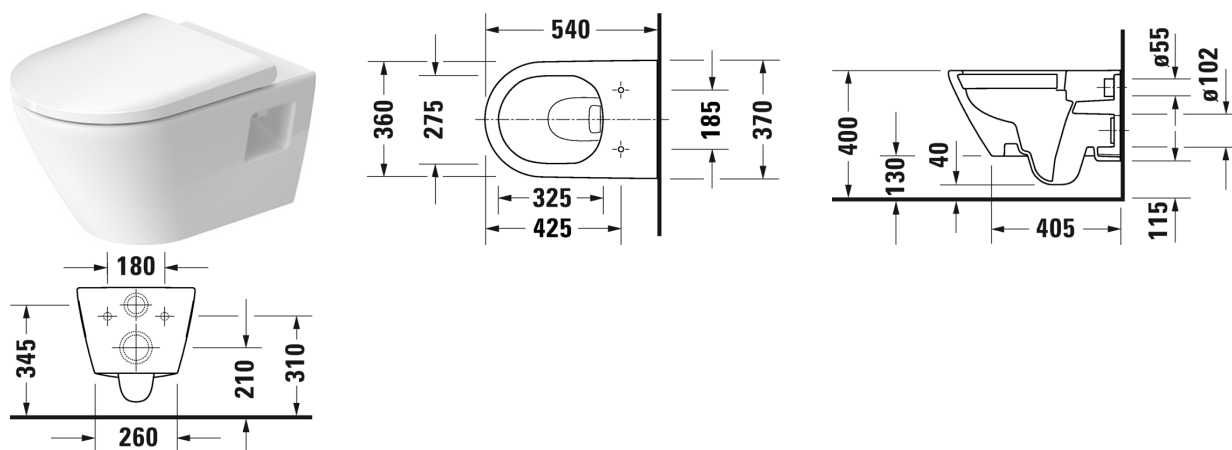


Toilet wall mounted Duravit Rimless® # 257809..00 / 257809..00

| < 370 mm > |



Toilet wall mounted Duravit Rimless®	Dimension	Weight	Order number
rimless, washdown model, UWL class 1, 4,5 litre flush			
Colors			
00 White Alpin 20 HygieneGlaze (an antibacterial ceramic glaze that provides almost indefinite effectiveness)			
Variant			
•	370 x 540 mm	26.500 kg	257809..00
•	370 x 540 mm	26.500 kg	257809..00
Infobox			
If pre-wall carrier not used, the fixing # 006500 is recommended			
Sanitary ceramics with the special WonderGliss surface finish will remain clean and attractive-looking for a long time to come. When ordering WonderGliss please add a "1" as eleventh digit to the model number.			
Accessory			
Noise reduction gasket			Schallschutz-Set 005090
Fixing for wall mounted bidet and wall mounted toilet	Ø 12 x 180 mm	0.200 kg	006500
Suitable products			
Toilet seat and cover hinges stainless steel, without automatic closure,			002161
Toilet seat and cover removable, hinges stainless steel, with automatic closure,			002169

**Toilet wall mounted Duravit Rimless® # 257809..00 /
257809..00**

|< 370 mm >|

*All drawings contain the necessary measurements which are subject to standard tolerances. They are stated in mm and are non-binding.
Exact measurements, in particular for customised installation scenarios, can only be taken from the finished piece.*