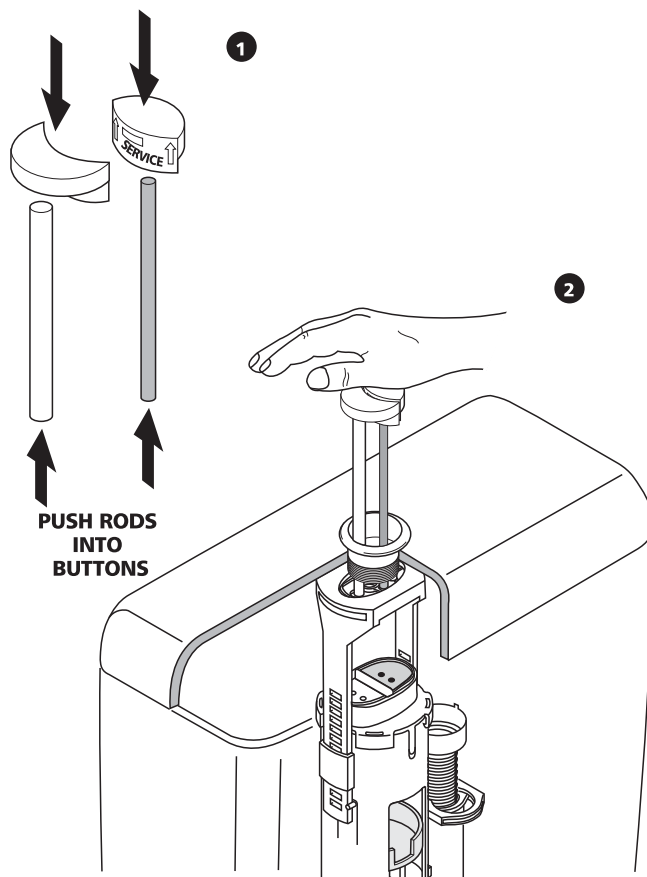
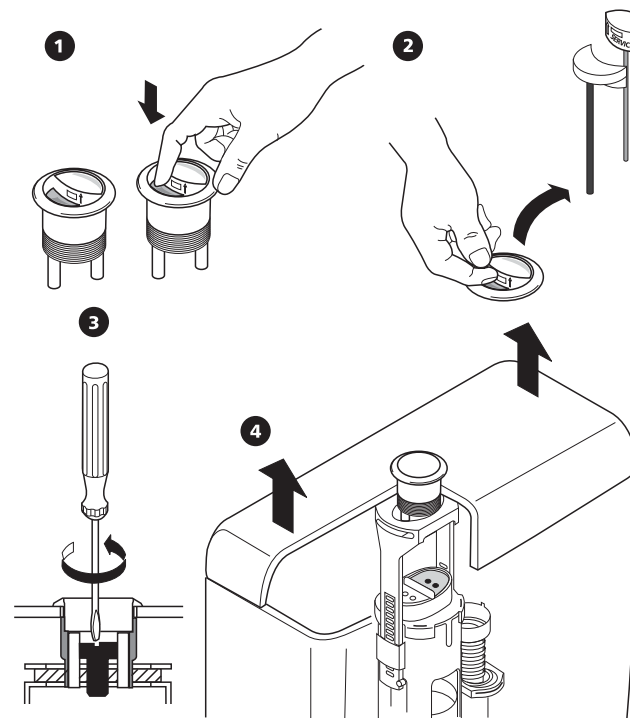


## 5. FITTING PUSH BUTTONS



## TO REMOVE CISTERN LID



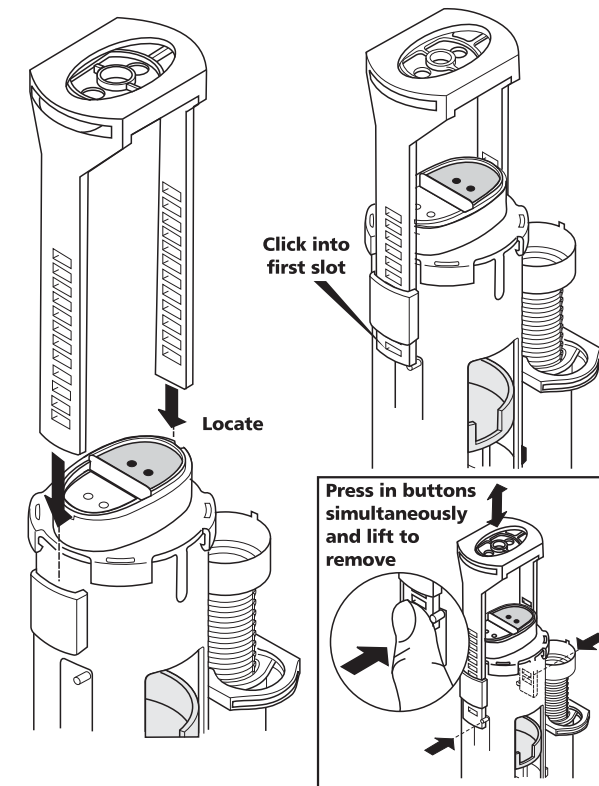
We pursue a policy of continuing improvement in design and performance of our products. The right is, therefore, reserved to vary specifications without notice.

4155 03/08

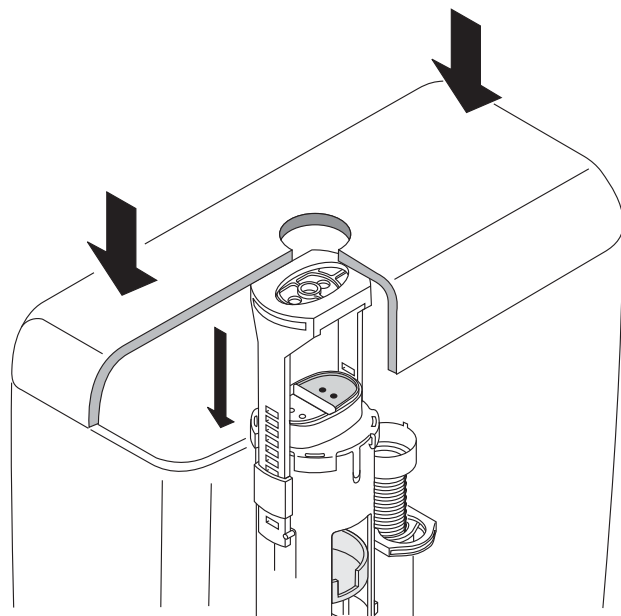
## DUAL FLUSH VALVE PUSH BUTTON ASSEMBLY

### Installation Instruction

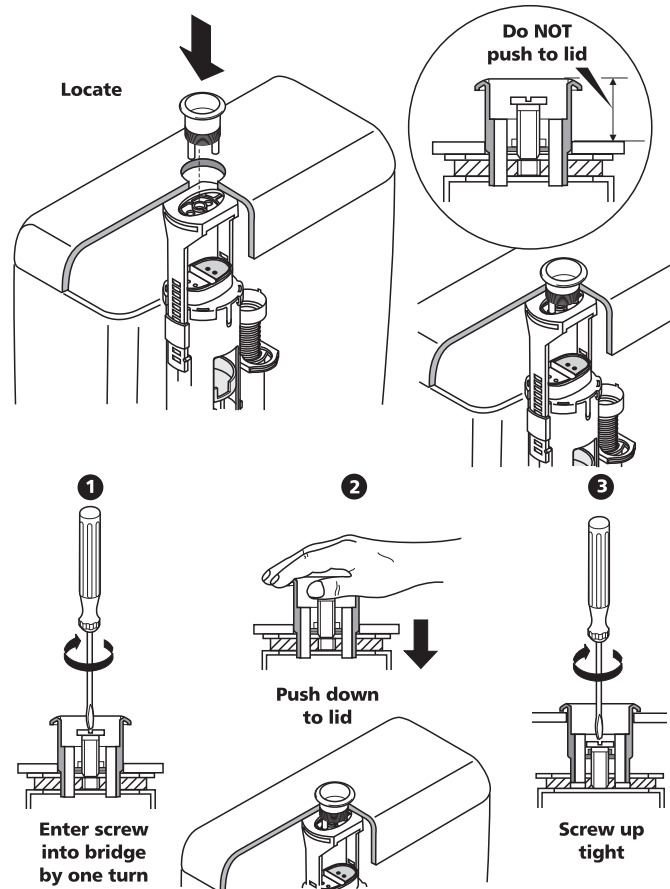
#### 1. FITTING VALVE BRIDGE



## 2. PLACE ON CISTERN COVER



## 3. FITTING PUSH BUTTON HOLDER



## 4. CUTTING PUSH BUTTON RODS TO LENGTH

