

## Doc M Contour 21 Ambulant Care Close Coupled Pack

### ILLUSTRATED

**S6958** Doc M Contour 21 Ambulant care WC pack with close coupled WC and cistern with spatula lever, grab rails, seat no cover with retaining buffers and white plastic clothes hook

### ILLUSTRATED PRODUCT DETAILS

#### Weights

**S6958** 69.65 KG

#### Finishes

**S6958**  White (AC)

#### Materials

**S6958** Vitreous China

### FINISH OPTIONS



(AC) White



(LI) Blue



(MY) Stainless Steel finish



(LJ) Grey



(RN) Charcoal

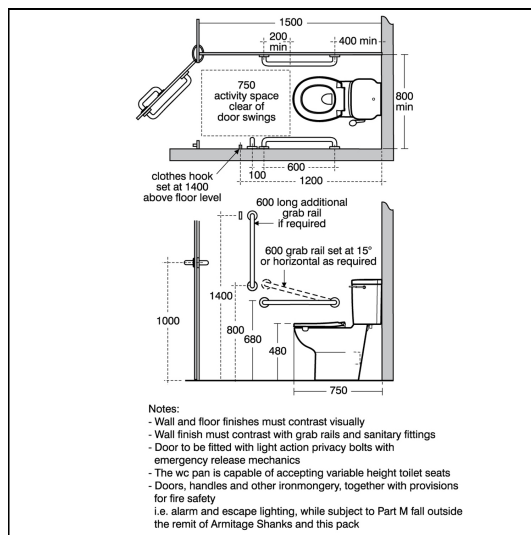
#### Standards

Vitreous china to BS 3402

#### Special Notes

Flushing lever can be fitted on left or right hand of cisterns. All washrooms must have at least one ambulant accessible wc compartment. Supplied with layout drawings, detailing the fixing positions necessary for Doc M compliance.

See seat and rail pages for individual colour options



### ACCREDITATIONS



### FEATURES

