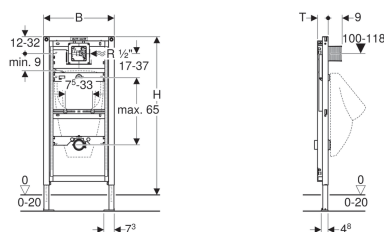


## Geberit Duofix frame for urinal, 112–130 cm, universal



Example image



### Application purposes

- For drywall construction
- For installation in part- or room-height prewall installations
- For installation in room-height installation walls
- For installation in part- or room-height Geberit Duofix system walls
- For mounting urinals
- For installation of Geberit urinal flush controls (from year of manufacture 2009)
- For floor constructions 0–20 cm

### Characteristics

- Self-supporting frame, powder-coated
- Frame with  $\varnothing$  9 mm drilling holes for fastening in wood frame construction
- Galvanized feet
- Feet adjustable 0–20 cm
- Non-slip leg supports
- Rotatable foot plates
- Foot plate depth suitable for installation in U-profiles UW 50 and UW75 and Geberit Duofix system rails
- Element height adjustable to urinal, 112–130 cm
- Universal concealed housing for Geberit urinal flush controls
- Terminal for electrical connection in concealed housing
- Right water supply connection on concealed housing
- Water supply connection compatible with MasterFix and MeplaFix
- Elbow connector can be mounted without tools
- Premounted stop valve with throttle
- With built-in conduit pipe to rinse the pipeline

- Protection box for service opening 10.5 x 10.5 cm can be cut to length without tools
- Flush hose can be bent
- Flush hose with guide to prevent standing water
- Fastening for inlet  $\varnothing$  32 mm, height-adjustable
- Fastening for connection bend, height-adjustable and sound-absorbing
- Urinal fasteners M8 width- and height-adjustable
- Crossbars with centring marks, adjustable without tools
- Additional fastening possible for urinal with accessories
- Can be refitted with accessories to fit urinals with spray head

### Technical data

Flow pressure	1-8 bar
Maximum test pressure, water	16 bar
Maximum test pressure, air / inert gas	3 bar
Maximum operating temperature, water	30 °C
Flow rate at 1 bar without flow limiter	0.3 l/s
Flow rate at 1 bar with flow limiter	0.18 l/s

### Scope of delivery

- Water supply connection R 1/2"
- Protection box with cover
- Connection pipe between inlet  $\varnothing$  32 mm and urinal, with seal to urinal
- Protection plug
- Straight connector made of PVC,  $\varnothing$  50 mm
- Urinal trap  $\varnothing$  50 mm, with seal on urinal
- 2 threaded rods M8
- Fastening material

Art. no.	B	H	T
111.623.00.1	50 cm	112–130 cm	7.5 cm

### Accessories

- Geberit inlet crossbar for urinal, with spray head
- Geberit Duofix set of wall anchors for single installation
- Geberit Duofix set of wall anchors for single and system installation
- Geberit Duofix foot fastener set on rear wall
- Geberit Duofix fastening set for stud clearance 50–57.5 cm
- Geberit Duofix set of foot extensions for floor construction 20–40 cm
- Geberit Duofix set of leg supports with large foot plate



- 
- Refer to your local water authority for further guidance on compliance to UK water regulations
  - Suitable for urinals with a push fit inlet connection
  - Conversion possible for urinals with spray head with accessory, art. no. 119.707.00.1 or cross bar art. no. 242.042.00.1
  - Can be used for mains or tank fed water supply
  - Any boarding must be fixed tight up against the face of the Duofix frame and screwed directly to the frame
  - Can be operated with used water (rainwater) provided it is passed through a filter system first