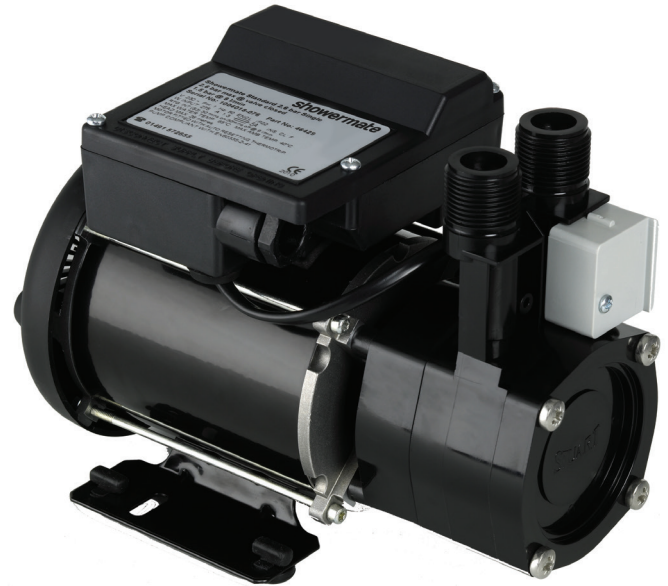


# SHOWERMATE

## Standard Single Pumps

Showermate Standard Single pumps are ideal for boosting water pressure in either the hot or cold water supply of a positive head application in vented systems.

They require a gravity flow of more than 0.8 litres per minute to start and are ideal for boosting the blended water outlet between the shower valve and shower head.

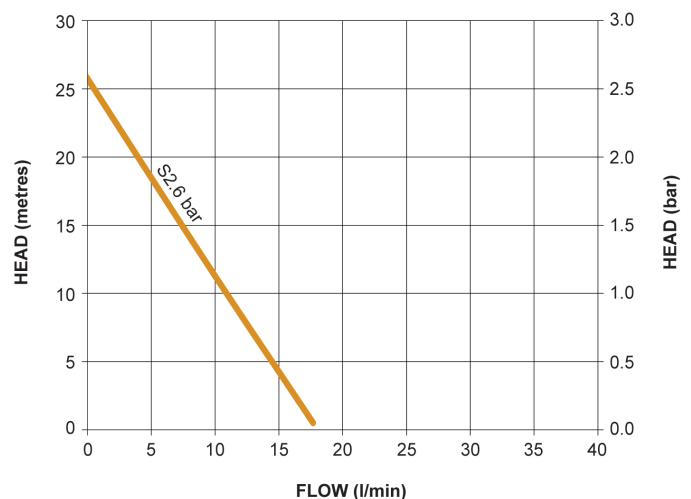


### Features

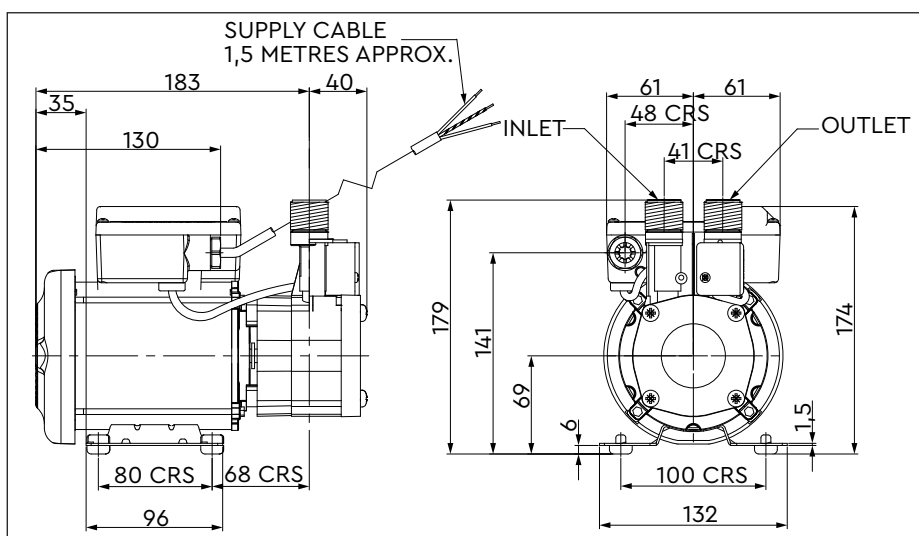
- 3 year guarantee
- 2.6 bar option
- Suitable for positive head applications
- High quality, high performing plastic pump supplied with 15 mm flexible hoses with integral ISO valves
- Quiet operation
- WRAS approved product
- Continuously rated
- Anti-vibration feet
- EPDM/PTFE/Al. Oxide seal
- Pre-wired with 1.5 metre power cable

### Application

- Boosting hot and cold water supplies to taps, showers or a complete bathroom in low pressure gravity systems
- Suitable for use where there is already more than 1 litre/sec flow from the outlet(s) to be boosted



Pump Model		S2.6 bar Single 46429
General	Guarantee	3 years
	WRAS approval	1709101
	Approvals	WRAS, CE
Features	Pump type	Peripheral
	Mechanical seal	EPDM / PTFE / Al. Oxide
	Anti-vibration feet	✓
	Flexible hoses	2
	Dry run protection	✓
	Noise (dB(A))	52
Materials	Pump body	Plastic
	Impeller	Plastic
Performance	Maximum head (closed valve)	2.6 bar (26 metres)
	Performance @ 9 l/min	1.3 bar
	Performance @ 18 l/min	0 bar
	Maximum flow	18 l/min
	Maximum static inlet pressure	13 metres
	Maximum working pressure*	380 kPa (3.8 bar)
	Maximum ambient air temperature	40 °C
	Min / Max water temperature**	Min 4 °C / Max 65 °C
	Flow switch sensitivity (approx)	0.8 l/min
Connections	Pump connections	G ¾ male
Flexible hoses	Connections (UK model)	G ¾ female x 15 mm push-in x 200 mm long, isolating valves on inlet hoses
Motor	Type	Induction, auto-reset thermal trip
	Duty rating	Continuous (S1) @ 9 l/min and above
Electrical	Power supply / phase / frequency	230 V a.c. / 1 / 50 Hz
	Current (full load)	1.1 Amps
	Power consumption	245 Watts
	Fuse rating	5 Amps
	Power cable (pre-wired)	1.5 metres
Physical	Enclosure protection	IP22
	Length	223 mm
	Width	132 mm
	Height (excluding hoses)	179 mm
	Weight (including fittings)	4.0 Kg



\* The maximum pressure that can be applied to the pump under any installation conditions.

\*\* A stored water temperature of 60 °C is considered sufficient to meet all normal requirements and will minimise deposition of scale in hard water areas.

Stuart Turner Limited reserves the right to amend specifications without notice.

Stuart Turner Ltd, Henley-on-Thames, Oxfordshire RG9 2AD Tel: +44 (0) 1491 572655 Fax: +44 (0) 1491 573704  
TechAssist Helpline +44 (0) 800 31 969 80  
www.stuart-turner.co.uk

Pt. No. 19214 Issue 1919/3-01