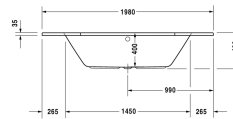
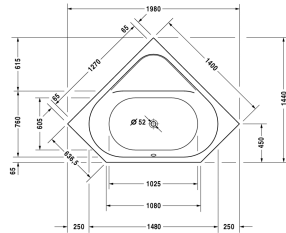


**Bathtub with support feet (for standard installation) #
70013900000000**

|< 1400 mm >|



Bathtub with support feet (for standard installation)	Dimension	Weight	Order number
corner, built-in, sanitary acrylic , Filling capacity 140 l			
Colors			
00 White Alpin			
Variant			
Basic model	1400 x 1400 mm	28.000 kg	70013900000000
Suitable products			
Bathtub anchors for mounting and support of D-code bathtubs and shower trays, 3 pieces,			790125
Waste and overflow chrome, for D-Code bathtubs with central outlet, outlet diameter 52 mm, length of bowden cable 1000 mm,			790226
Rubber profile for D-Code, for noise reduction, length: 3300 mm,			790126
Noise reduction set for acrylic bathtubs ****, Contents: noise protection bathtub anchors, bitumen pads, rubber profile # 790104,			791368

All drawings contain the necessary measurements which are subject to standard tolerances. Exact measurements, in particular for customised installation scenarios, can only be taken from the finished ceramic piece.