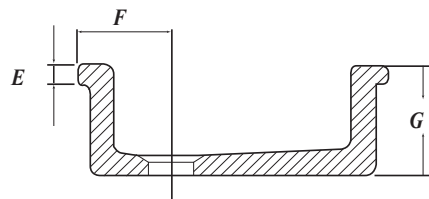
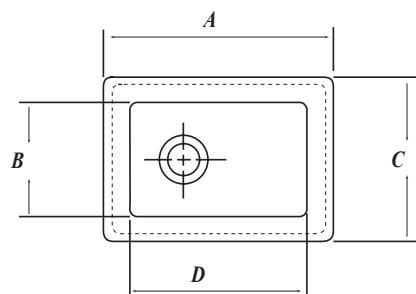




18" Drainer

Shown: Lab sink.
LABSINK1



Overview:

Extremely durable science-friendly fireclay lab sinks, designed to fix under a bench-top. Available in four sizes with an additional drainer, this range is stain resistant and anti-bacterial.

Key product features:

- Stain and germ resistant
- Made from heavy duty fireclay
- CE Compliant
- Inset or under-mount installation.

Product:	Laboratory sinks			
Code:	LABSINK1	LABSINK2	LABSINK3	LABSINK4
Weight in kg:	14	17	26	38
Colour:	White			
Material:	Fireclay			
Standard:	BS5506/3, EN695, EN37			
DOP:	n/a	n/a	n/a	n/a
BiM download:	x	x	x	x
CAD download:	x	x	x	x
Option:	18"x18" drainer: DRAINER			

Special notes:

1.5" Sink waste outlet and no overflow
Acid and alkali resistant

Product dimensions:

Size	A	B	C	D	E	F	G
Lab 1	360	200	280	280	120	22	178
Lab 2	330	250	330	250	120	22	180
Lab 3	595	305	380	515	120	22	230
Lab 4	460	375	280	365	120	22	200

All dimensions are approximate and subject to normal ceramic variation. Although every effort is made not to change the above product specification, Lecico reserve the right to do so without prior notification if necessary.