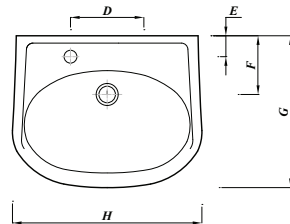
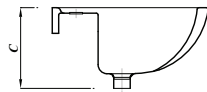
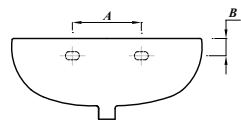




Shown: 52cm right handed basin with sequential mixer tap.
DOCM51BARH - DMIXER



CI/SFB
(74)

Overview:

The standard DocM basin features a left or right handed tap hole. Ideal for commercial applications and is compliant with LANTAC. This basin has no overflow or chain-stay hole and is supplied as either left or right handed.

Key product features:

- No overflow
- CE Compliant
- smooth easy clean design

Product:	45cm Basin	52cm Basin
Left handed code:	DOCM45BALH	DOCM51BALH
Right handed code:	DOCM45BARH	DOCM51BARH
Weight in kg:	10.2	12.5
Colour:	White	
Material:	Vitreous china	
Standard:	EN14688-CL00	
DOP:	WBVC5	
BiM download:	✓	✓
CAD download:	✓	✓
Full pedestals:	N/A	
Semi pedestal:	N/A	
Wall mounted:	Bracket - BRACK / Fixing bolts - FBWB	
Options:	Grated waste - DGRWASTE	

Product dimensions:

Size	A	B	C	D	E	F	G	H
45cm	180	57	220	N/A	57	160	347	453
52cm	172	60	220	N/A	57	160	414	518

All dimensions are approximate and subject to normal ceramic variation. Although every effort is made not to change the above product specification, Lecico reserve the right to do so without prior notification if necessary.